

# PARTS MANUAL



## **MODEL LT6KV 60 HZ LIGHT TOWER/GENERATOR (KOHLER KDW 1003 DIESEL ENGINE)**

Revision #0 (07/08/16)

To find the latest revision of this  
publication, visit our website at:  
[www.multiquip.com](http://www.multiquip.com)



**THIS MANUAL MUST ACCOMPANY THE EQUIPMENT AT ALL TIMES.**

**P/N: 44228**

## TABLE OF CONTENTS

---

### LT6KV 60Hz Light Tower

Table Of Contents.....	2
Parts Ordering Procedures.....	3
Explanation Of Code In Remarks Column.....	4
Suggested Spare Parts .....	5
Nameplate And Decals.....	6-13
Cabinet Assembly.....	14-15
Rear Panel Assembly .....	16-17
Front Panel Assembly.....	18-19
Ballast And Capacitor Assembly .....	20-21
Tower Assembly.....	22-23
Mast Catch Assembly.....	24-25
Mast Assembly .....	26-27
Lifting Bale Assembly .....	28-29
T-Bar Assembly.....	30-31
Engine Mounting.....	32-33
Engine And Components.....	34-35
Tub/Trailer Assembly.....	36-37
Tongue Assembly .....	38-39
Jack Stand Assembly .....	40-41
Generator Assembly.....	42-43
Battery Assembly.....	44-45
Coil Cord Assembly .....	46-47
Lamp Assembly .....	48-49
Control Panel Assembly .....	50-53
Cross Bar/Control Panel Assembly .....	54-55
Fuel Tank, Hoses And Mounting Assembly .....	56-57
Terms And Conditions Of Sale — Parts .....	58

#### **NOTICE**

Specifications and part numbers are subject to change without notice.

# PARTS ORDERING PROCEDURES

## Ordering parts has never been easier! Choose from three easy options:

Effective:  
January 1<sup>st</sup>, 2006



### Order via Internet (Dealers Only):

Order parts on-line using Multiquip's SmartEquip website!

- View Parts Diagrams
- Order Parts
- Print Specification Information



If you have an MQ Account, to obtain a Username and Password, E-mail us at: **parts@multiquip.com**.

To obtain an MQ Account, contact your District Sales Manager for more information.

Goto [www.multiquip.com](http://www.multiquip.com) and click on

**Order Parts** to log in and save!

Use the **internet** and qualify for a **5% Discount** on *Standard orders* for all orders which include complete part numbers.\*

Note: Discounts Are Subject To Change



### Order via Fax (Dealers Only):

All customers are welcome to order parts via Fax.

**Domestic (US) Customers dial:**

1-800-6-PARTS-7 (800-672-7877)

**Fax** your order in and qualify for a **2% Discount** on *Standard orders* for all orders which include complete part numbers.\*

Note: Discounts Are Subject To Change



**Order via Phone:** Domestic (US) Dealers Call:  
1-800-427-1244

### Non-Dealer Customers:

Contact your local Multiquip Dealer for parts or call 800-427-1244 for help in locating a dealer near you.



**International Customers** should contact their local Multiquip Representatives for Parts Ordering information.

## When ordering parts, please supply:

- ☐ Dealer Account Number
- ☐ Dealer Name and Address
- ☐ Shipping Address (if different than billing address)
- ☐ Return Fax Number
- ☐ Applicable Model Number
- ☐ Quantity, Part Number and Description of Each Part

### ☐ Specify Preferred Method of Shipment:

- ☒ UPS/Fed Ex
- ☒ Priority One
- ☒ Ground
- ☒ Next Day
- ☒ Second/Third Day
- ☒ DHL
- ☒ Truck

### NOTICE

All orders are treated as *Standard Orders* and will ship the same day if received prior to 3PM PST.

WE ACCEPT ALL MAJOR CREDIT CARDS!



www.multiquip.com



## EXPLANATION OF CODE IN REMARKS COLUMN

The following section explains the different symbols and remarks used in the Parts section of this manual. Use the help numbers found on the back page of the manual if there are any questions.

### NOTICE

The contents and part numbers listed in the parts section are subject to change **without notice**. Multiquip does not guarantee the availability of the parts listed.

### SAMPLE PARTS LIST

NO.	PART NO.	PART NAME	QTY.	REMARKS
1	12345	BOLT .....	1	INCLUDES ITEMS W/%
2%		WASHER, 1/4 IN. ....		NOT SOLD SEPARATELY
2%	12347	WASHER, 3/8 IN. ...	1	MQ-45T ONLY
3	12348	HOSE .....	A/R	MAKE LOCALLY
4	12349	BEARING .....	1	S/N 2345B AND ABOVE

### NO. Column

**Unique Symbols** — All items with same unique symbol (@, #, +, %, or >) in the number column belong to the same assembly or kit, which is indicated by a note in the “Remarks” column.

**Duplicate Item Numbers** — Duplicate numbers indicate multiple part numbers, which are in effect for the same general item, such as different size saw blade guards in use or a part that has been updated on newer versions of the same machine.

### NOTICE

When ordering a part that has more than one item number listed, check the remarks column for help in determining the proper part to order.

### PART NO. Column

**Numbers Used** — Part numbers can be indicated by a number, a blank entry, or TBD.

TBD (To Be Determined) is generally used to show a part that has not been assigned a formal part number at the time of publication.

A blank entry generally indicates that the item is not sold separately or is not sold by Multiquip. Other entries will be clarified in the “Remarks” Column.

### QTY. Column

**Numbers Used** — Item quantity can be indicated by a number, a blank entry, or A/R.

A/R (As Required) is generally used for hoses or other parts that are sold in bulk and cut to length.

A blank entry generally indicates that the item is not sold separately. Other entries will be clarified in the “Remarks” Column.

### REMARKS Column

Some of the most common notes found in the “Remarks” Column are listed below. Other additional notes needed to describe the item can also be shown.

**Assembly/Kit** — All items on the parts list with the same unique symbol will be included when this item is purchased.

Indicated by:

“INCLUDES ITEMS W/(unique symbol)”

**Serial Number Break** — Used to list an effective serial number range where a particular part is used.

Indicated by:

“S/N XXXXX AND BELOW”

“S/N XXXX AND ABOVE”

“S/N XXXX TO S/N XXX”

**Specific Model Number Use** — Indicates that the part is used only with the specific model number or model number variant listed. It can also be used to show a part is NOT used on a specific model or model number variant.

Indicated by:

“XXXXX ONLY”

“NOT USED ON XXXX”

**“Make/Obtain Locally”** — Indicates that the part can be purchased at any hardware shop or made out of available items. Examples include battery cables, shims, and certain washers and nuts.

**“Not Sold Separately”** — Indicates that an item cannot be purchased as a separate item and is either part of an assembly/kit that can be purchased, or is not available for sale through Multiquip.

## SUGGESTED SPARE PARTS

### LT6KV LIGHT TOWER

#### 1 to 3 units

Qty.	P/N	Description
2.....	MVR1000BT37.....	BULB, LIGHT FIXTURE
1.....	190ZQREF .....	REF 1000 LENS
1.....	200ZG106.....	GASKET, U-CHANL REFLEC
1.....	12009.....	FILTER, IN-TANK (FUEL)
1.....	29694.....	CAP, FUEL W/LANYARD
1.....	59006.....	EXCITATION CAPACITOR
1.....	19598.....	CAP. 24uF LAMP BALLAST
1.....	34098.....	CIRCUIT BREAKER, 15A
2.....	34097.....	CIRCUIT BREAKER, 20A
1.....	34096.....	CIRCUIT BREAKER, 30A
1.....	34093.....	JACK, 2000#, 10" TOP WIND
1.....	34101.....	COVER, ACCESS PANEL
1.....	34378.....	GASKET, ACCESS PANEL
1.....	16185.....	FITTING, PLUG

#### NOTICE

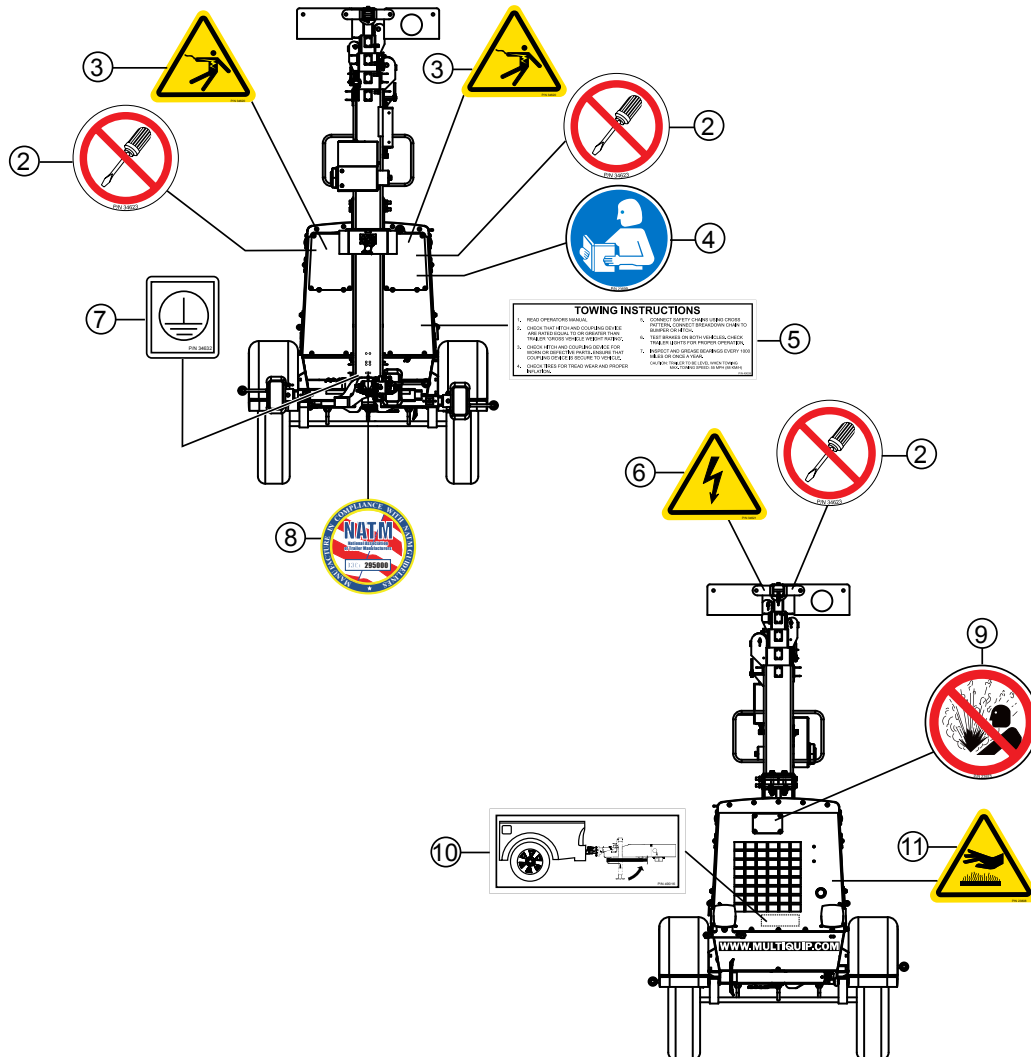
Part numbers on this Suggested Spare Parts list may supersede/replace the part numbers shown in the following parts lists.

### KOHLER KDW1003 DIESEL ENGINE

#### 1 to 3 units

Qty.	P/N	Description
3.....	ED0021752880S ..	FUEL FILTER
3.....	ED0021752830S ..	OIL FILTER
3.....	ED0021751640S ..	CARTRIDGE, AIR FILTER
1.....	ED0024403200S ..	FAN BELT
1.....	ED0067450560S ..	OIL PRESSURE SWITCH
2.....	ED34001S .....	KEY, IGNITION, DBL SIDED

# NAMEPLATE AND DECALS

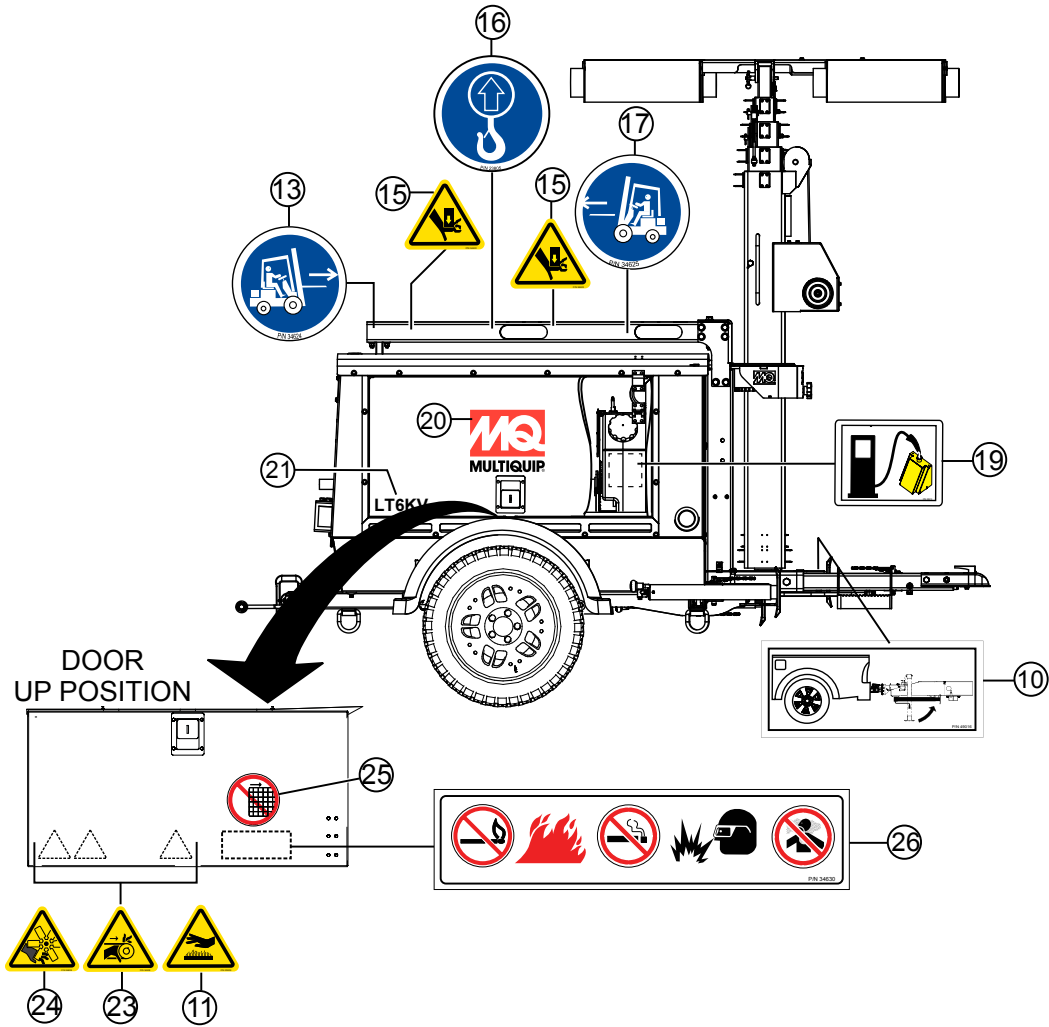


## NAMEPLATE AND DECALS

---

<u>NO.</u>	<u>PART NO.</u>	<u>PART NAME</u>	<u>QTY.</u>	<u>REMARKS</u>
2	34623	DECAL ISO: DND. HAZ., 2.00" DIA.	3	
3	34620	DECAL ISO: ELEC. HAZARD, 2.4" X 2.0"	2	
4	23699	DECAL ISO: READ MANUAL, 2.00" DIA.	1	
5	49009	DECAL: TOWING INST., 7.75" X 2.5	1	
6	34621	DECAL ISO: HI. VOL. HAZARD, 2.4" X 2.0"	1	
7	34632	DECAL ISO: GROUND 1.00" X 1.00"	1	
8	EE56342	DECAL: NATM, 2.75" DIA.	1	
9	23875	DECAL ISO: HOT CLNT HAZARD, 2.00" DIA.	1	
10	49016	DECAL: HORI. JACK STANDS 4.10" X 1.80"	3	
11	23808	DECAL ISO: HOT SUR. HAZARD 2.4" X 2.00"	2	
12	34808	DECAL: MQ WEBSITE 18.00" X 1.20"	1	

## NAMEPLATE AND DECALS





## NAMEPLATE AND DECALS

<u>NO.</u>	<u>PART NO.</u>	<u>PART NAME</u>	<u>QTY.</u>	<u>REMARKS</u>
10	49016	DECAL: HORI. JACK STANDS 4.10" X 1.80"	3	
11	23808	DECAL ISO: HOT SURFACE HAZARD 2.4" X 2.00"	2	
13	34624	DECAL ISO: FORKLIFT LEFT 2.00" DIA.	2	
15	34622	DECAL ISO: CRUSH HAZARD 2.4" X 2.0"	6	
16	34626	DECAL ISO: LIFTING POINT 2.00" DIA	2	
17	34625	DECAL ISO: FORKLIFT RIGHT 2.00" DIA	2	
18	34631	DECAL: MAST ROT., 2.00" X 2.45"	1	
19	23813	DECAL: FUEL, DIESEL 2.00" X 2.45"	1	
20	34806	DECAL: MQ LOGO 12.00" X 10.00"	2	
21	44227	DECAL: LT6KV LOGO 10.00" X 3.00"	2	
23	34629	DECAL ISO: ENTANG. HAZARD, 2.4" X 2.00"	2	
24	34628	DECAL ISO: BLD ROT. HAZARD, 2.4" X 2.00"	2	
25	23874	DECAL ISO: DNR GDS. HAZARD 2.00" DIA.	2	
26	34630	DECAL: FIRE, EXP., SMOKING HAZARD 6.50" X 1.40"	1	

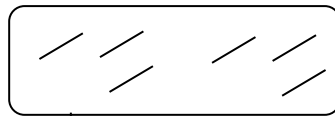
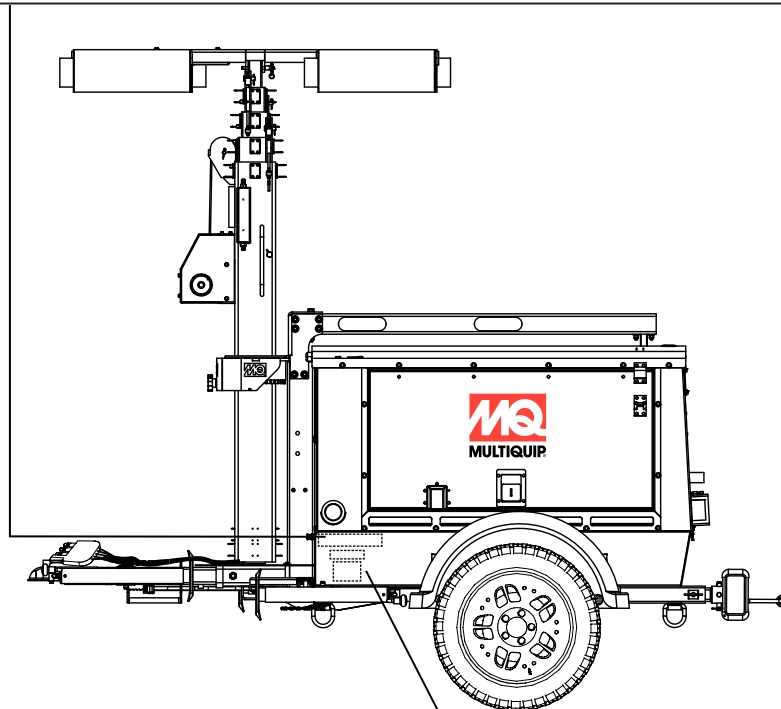


## NAMEPLATE AND DECALS

<u>NO.</u>	<u>PART NO.</u>	<u>PART NAME</u>	<u>QTY.</u>	<u>REMARKS</u>
1		DECAL: SERIAL PLATE .....	1	.....CONTACT MQ PARTS DEPT
10	49016	DECAL: HORI. JACK STANDS 4.10" X 1.80"	3	
13	34624	DECAL ISO: FORKLIFT LEFT 2.00" DIA.	2	
14	49911	DECAL: WARNING UV RAD., 6.50" X 3.40"	1	
15	34622	DECAL ISO: CRUSH HAZARD 2.4" X 2.0"	6	
16	34626	DECAL ISO: LIFTING POINT 2.00" DIA	2	
17	34625	DECAL ISO: FORKLIFT RIGHT 2.00" DIA	2	
20	34806	DECAL: MQ LOGO 12.00" X 10.00"	2	
21	44227	DECAL: LT6KV LOGO 10.00" X 3.00"	2	
22	34956	DECAL: OPR. INSTR. 13.25" X 13.25"	1	
23	34629	DECAL ISO: ENTANG. HAZARD, 2.4" X 2.00"	2	
24	34628	DECAL ISO: BLD ROT. HAZARD, 2.4" X 2.00"	2	
25	23874	DECAL ISO: DNR GDS. HAZARD 2.00" DIA.	2	
31	44189	DECAL: MAST OPR. INST., 16.23" X 5.2"	1	
32	4014	SCREW, 2-3/16 P-K TYPE U-DRIVE	2	

⚠ WARNING		⚠ WARNING		⚠ WARNING		⚠ WARNING			
<p>To prevent uncoupling from the tow vehicle perform the following:</p> <ol style="list-style-type: none"> <li>1. CHECK BALL and COUPLER for worn or defective parts.</li> <li>2. CHECK that BALL <u>load rating</u> is the same as or greater than the COUPLER <u>load rating</u>.</li> <li>3. CHECK that the BALL and COUPLER are the same size.</li> <li>4. Open COUPLER CLAMP and place onto BALL.</li> <li>5. Close COUPLER CLAMP.</li> <li>6. Lift COUPLER upwards to test that it will not separate from BALL.</li> <li>7. LOCK coupler clamp with pin or lock.</li> </ol>				<p>ALWAYS use safety chains. Safety chains keep unit attached to tow vehicle in the event of coupler malfunction.</p> <p>Perform the following when attaching safety chains:</p> <p>TOW VEHICLE FRAME</p> <ol style="list-style-type: none"> <li>1. CROSS chains underneath coupler.</li> <li>2. ALLOW for slack for trailer to turn.</li> <li>3. ATTACH safety chain hooks securely to tow vehicle frame.</li> </ol>		<p>Lights can prevent trailer from being hit by other vehicles. Perform the following when connecting the trailer lights:</p> <p>DISCONNECTED</p> <p>CONNECTED</p> <ol style="list-style-type: none"> <li>1. CONNECT trailer and tow vehicle light plugs.</li> <li>2. CHECK all lights: tail, turn, signal and brake. Make sure all lights are working properly.</li> <li>3. DO NOT TOW if lights are not working correctly.</li> </ol>		<p>Tire, wheel or lug nut failure can cause loss of control. Perform the following before towing:</p> <ol style="list-style-type: none"> <li>1. CHECK tire pressure and tread.</li> <li>2. CHECK tires and wheels for damage.</li> <li>3. CHECK lug nuts for tightness.</li> <li>4. For new and remounted wheels re-tighten lug nuts at first 10, 25 and 50 miles of driving.</li> <li>5. CHECK and test brakes on both vehicles.</li> <li>6. INSPECT and grease trailer bearings every 1000 miles or once a year.</li> <li>7. Trailer to be level when towing. Maximum towing speed not to exceed 55 MPH (88 KM/H).</li> </ol> <p>PIN 34527</p>	

27



28

MANUFACTURED BY (FABRIQUE) PAR: MULTIQIP INC.		DATE:	
COUNTRY (PAYS):	MODEL (MODELE):	COLOR (COULEUR):	WEIGHT (POIDS):
COLOR (COULEUR):	TYPE (TYPE):	DE (COUNTRY):	AT (COUNTRY):
TYPE (TYPE):	DATE (DATE):	DATE (DATE):	DATE (DATE):

THIS VEHICLE CONFORMS TO ALL APPLICABLE STANDARDS PRESCRIBED UNDER THE CANADIAN MOTOR VEHICLE SAFETY REGULATIONS IN EFFECT ON THE DATE OF MANUFACTURE. CE VEHICULE CONFORME A TOUTES LES NORMES REGLEMENTAIRES EN VIGUEUR AU PRESENT AU CANADA AU MOMENT DE LA MANUFACTURE.

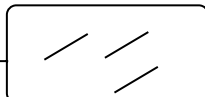
THIS VEHICLE CONFORMS TO ALL APPLICABLE U.S. FEDERAL MOTOR VEHICLE SAFETY STANDARDS IN EFFECT ON THE DATE OF MANUFACTURE SHOWN ABOVE.

TYPE: TRAILER

29

THIS VEHICLE CONFORMS TO ALL APPLICABLE STANDARDS PRESCRIBED UNDER THE CANADIAN MOTOR VEHICLE SAFETY REGULATIONS IN EFFECT ON THE DATE OF MANUFACTURE. CE VEHICULE CONFORME A TOUTES LES NORMES REGLEMENTAIRES EN VIGUEUR AU PRESENT AU CANADA AU MOMENT DE LA MANUFACTURE.	
The weight of your load must not exceed the gross vehicle weight rating (GVWR) shown on the label.	
GVWR (POIDS MAXI):	GVWR (POIDS MAXI):
GVWR (POIDS MAXI):	GVWR (POIDS MAXI):
GVWR (POIDS MAXI):	GVWR (POIDS MAXI):
GVWR (POIDS MAXI):	GVWR (POIDS MAXI):
GVWR (POIDS MAXI):	GVWR (POIDS MAXI):
GVWR (POIDS MAXI):	GVWR (POIDS MAXI):

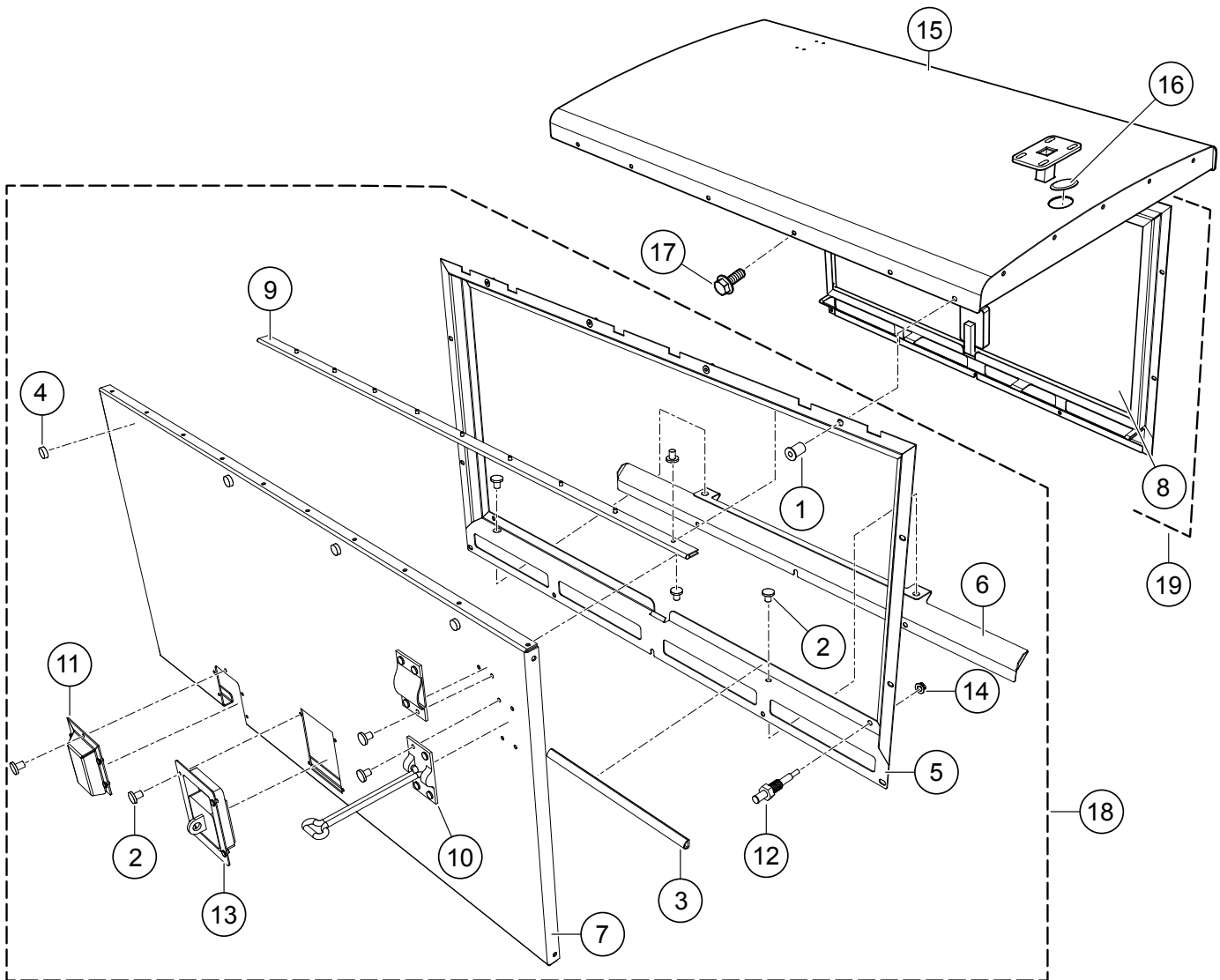
30



## NAMEPLATE AND DECALS

---

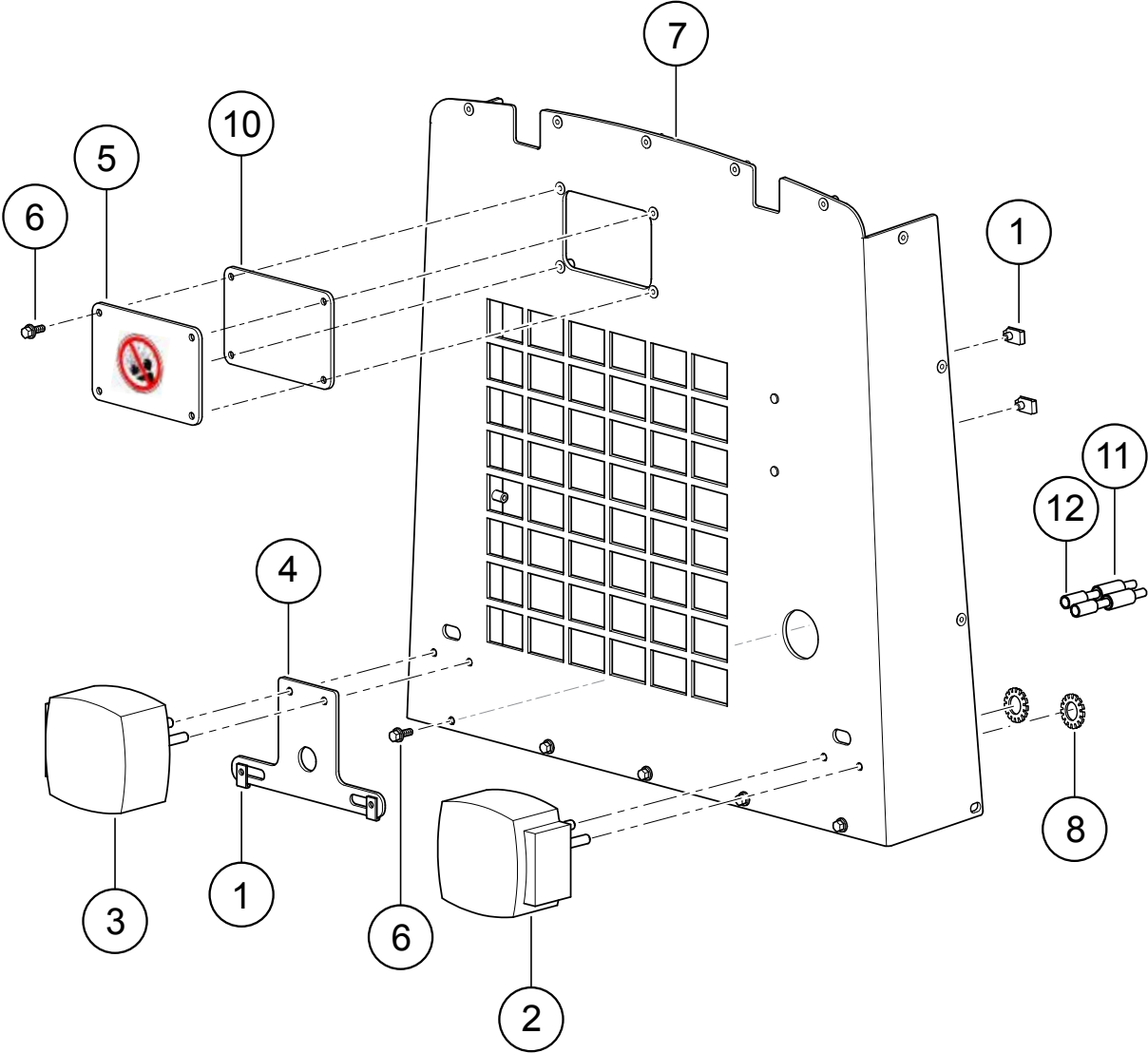
<u>NO.</u>	<u>PART NO.</u>	<u>PART NAME</u>	<u>QTY.</u>	<u>REMARKS</u>
27	34627	DECAL: WARNING, TOWING 13.1" X 2.3"	1	
28	EE56313	OVERLAY	1	
29		DECAL: VIN AND TIRE TAG .....	1.....	CONTACT MQ PARTS DEPT.
30	EE56314	OVERLAY	1	



## CABINET ASSY.

<u>NO.</u>	<u>PART NO.</u>	<u>PART NAME</u>	<u>QTY.</u>	<u>REMARKS</u>
1#@	19266	NUT, BLIND 1/4-20 X .027-.165	8	
2#@	19847	RIVET, POP, ALUM, 3/16x1/8-1/4" GRIP.....	79	LEFT AND RIGHT SIDE
3#@	29093	GASKET, 1' .....	8	1PC=1FT
4#@	29711	BUMPER, 1/2" DIA., BLACK	8	
5#@	34652	DOOR FRAME	2	
6#@	34655	BAFFLE, AIR INTAKE	2	
7#	34657	DOOR, SHEET METAL.....	1	LEFT SIDE ONLY
8@	34762	DOOR, SHEET METAL.....	1	RIGHT SIDE ONLY
9#@	34658	HINGE, DOOR	2	
10#@	34721	HOOK AND LATCH ASSY., 6"	2	
11#	34750	CORD HAT, AUX POWER ACCESS.....	1	LEFT SIDE ONLY
12#	39171	SWITCH, MOMENTARY DOOR .....	1	LEFT SIDE ONLY
13#@	49137	LATCH, DOOR	1	
14#	49071	NUT, FLANGED 5/16-18 SERRATED PLTD	1	
15	34642	LID	1	
16	20121	PLUG, SPIDER SNAP IN	1	
17	30119	SCREW, 1/4-20 X 7/8" IND HEX	39	
18	34761	DOOR, LEFT, ASSEMBLY .....	1	INCLUDES ITEMS W/#
19	34651	DOOR, RIGHT, ASSEMBLY .....	1	INCLUDES ITEMS W/@

**REAR PANEL ASSY.**



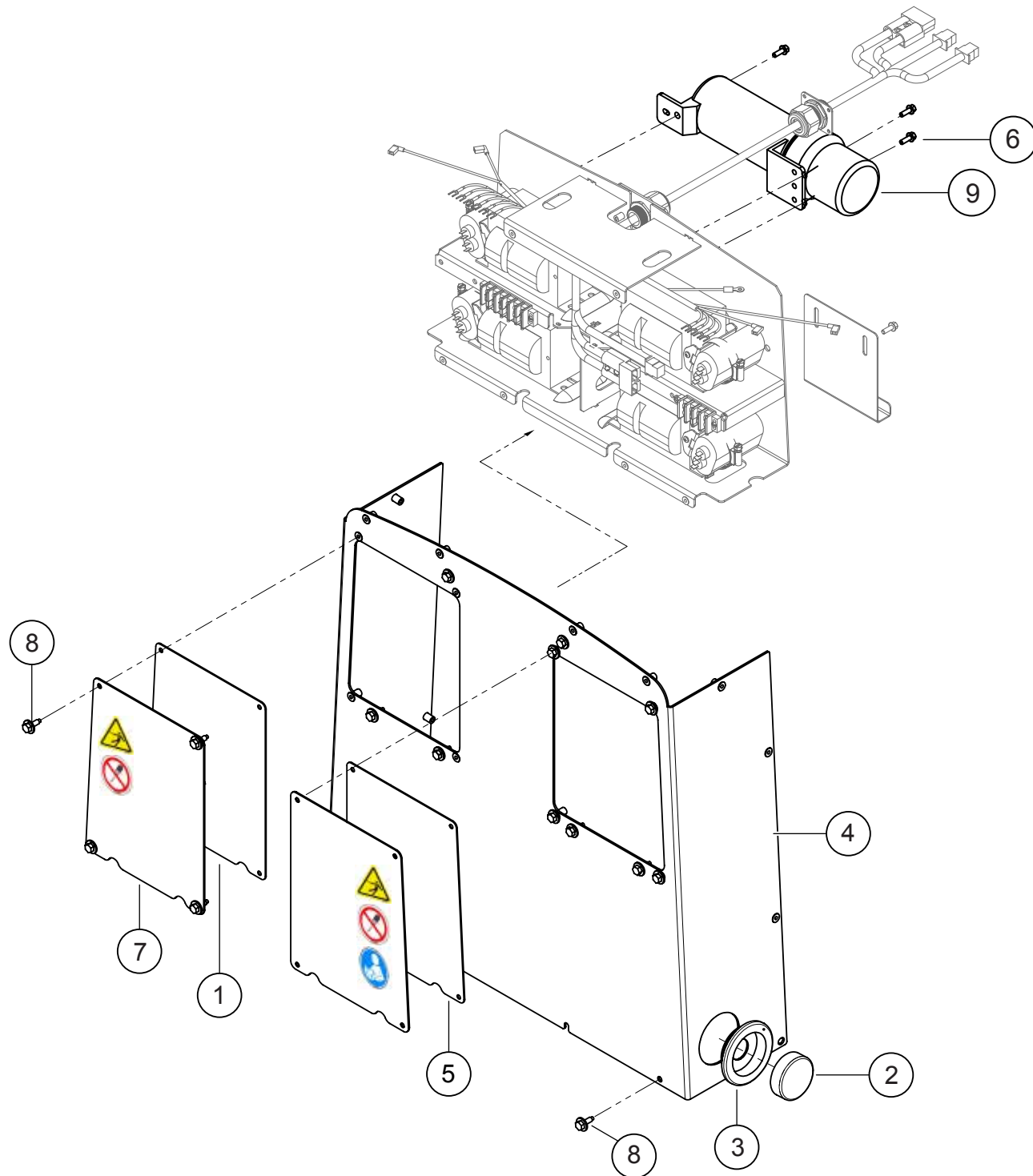


## REAR PANEL ASSY.

---

<u>NO.</u>	<u>PART NO.</u>	<u>PART NAME</u>	<u>QTY.</u>	<u>REMARKS</u>
1	11534	NUT, "U" TYPE, 1/4-20	4	
2	29242	LIGHT, TAIL RIGHT (CURBSIDE)	1	
3	29243	LIGHT, LEFT TAIL LIGHT (ROAD SIDE)	1	
4	34682	BRACKET, LICENSE PLATE	1	
5	34691	COVER, RADIATOR FILL ACCESS	1	
6	30119	SCREW, HHFS 1/4-20 X 7/8"	9	
7	34732	REAR PANEL ASM, W/INSERTS	1	
8	10031	WASHER, EXT. SHKP, 1/4"	4	
10	34815	GASKET, RAD FILL COVER	1.5	
11	34928	TERMINAL, .156 BULLET MALE, 22-18	4	
12	1318	TERMINAL, BULLET, FEM, 18-22	4	

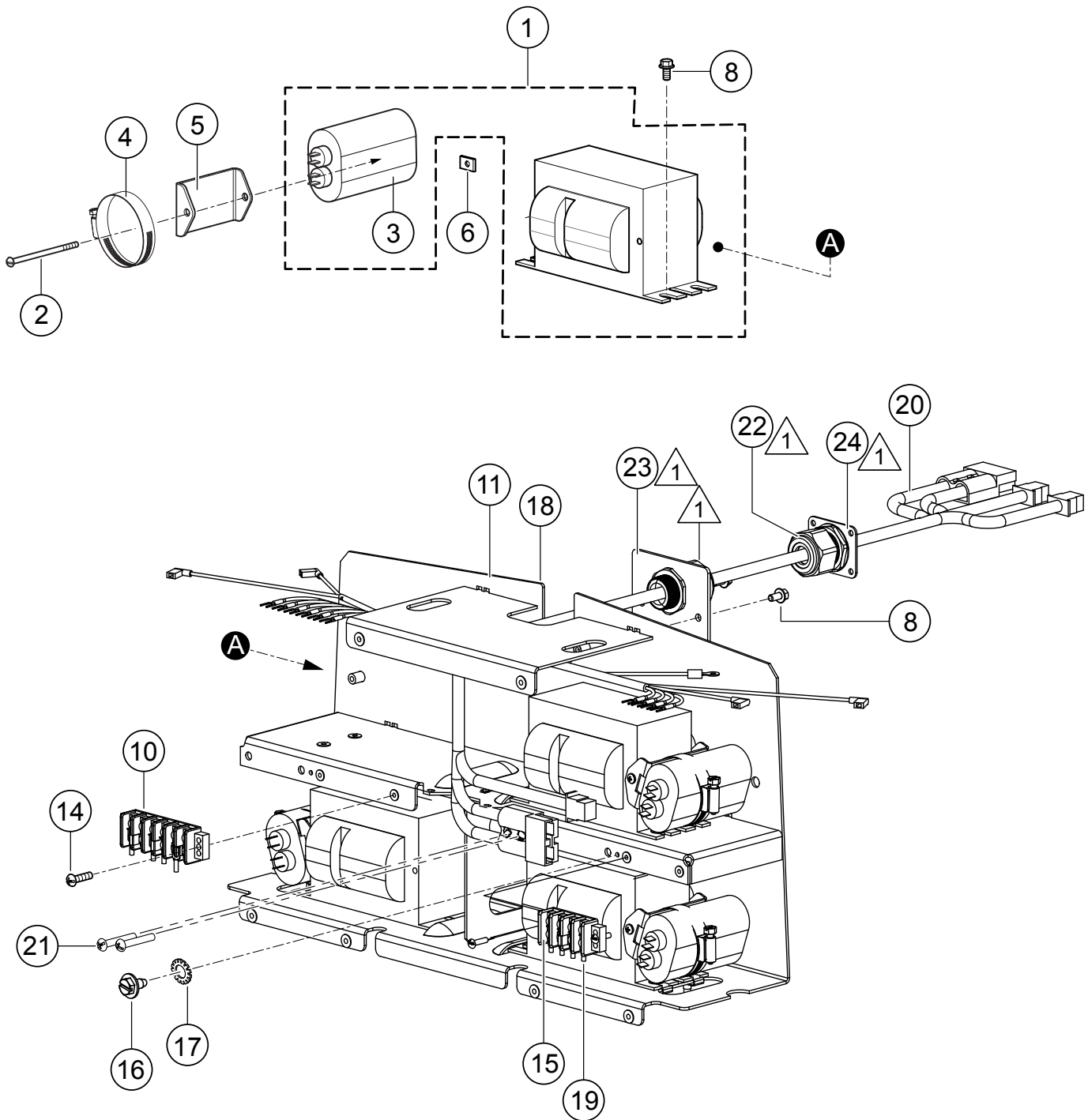
## FRONT PANEL ASSY.



## FRONT PANEL ASSY.

<u>NO.</u>	<u>PART NO.</u>	<u>PART NAME</u>	<u>QTY.</u>	<u>REMARKS</u>
1	34816	GASKET, BALLAST ACCESS PANEL	1	
2	29898	LIGHT, 2-1/2" SIDE MARKER, AMBER	2	
3	29900	GROMMET W/WIRE KIT, 2-1/2", 14218K	2	
4	44186	FRONT PANEL ASSEMBLY	1	
5	34818	GASKET, BALLAST COVER, LEFT	1	
6	49048	SCREW, HHFS 1/4-20 X 3/4" GR 5	3	
7	34728	PANEL, BALAST ACCESS FRONT	2	
8	30119	SCREW, 1/4-20 X 7/8"	18	
9	23297	MANUAL HOLDER	1	

# BALLAST AND CAPACITOR ASSY.

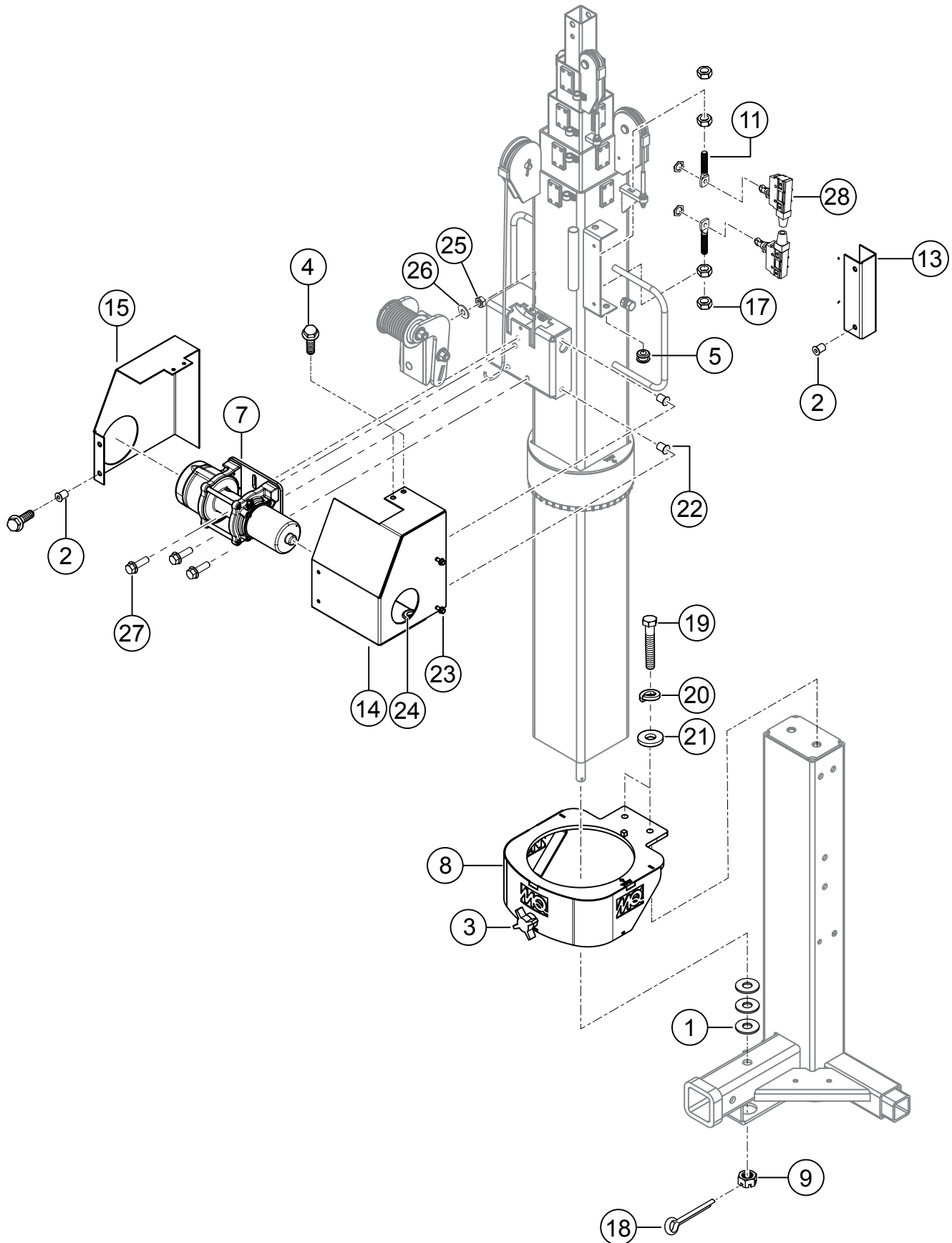


## NOTES:

**1** INCLUDED W/ ITEM 20.

## BALLAST AND CAPACITOR ASSY.

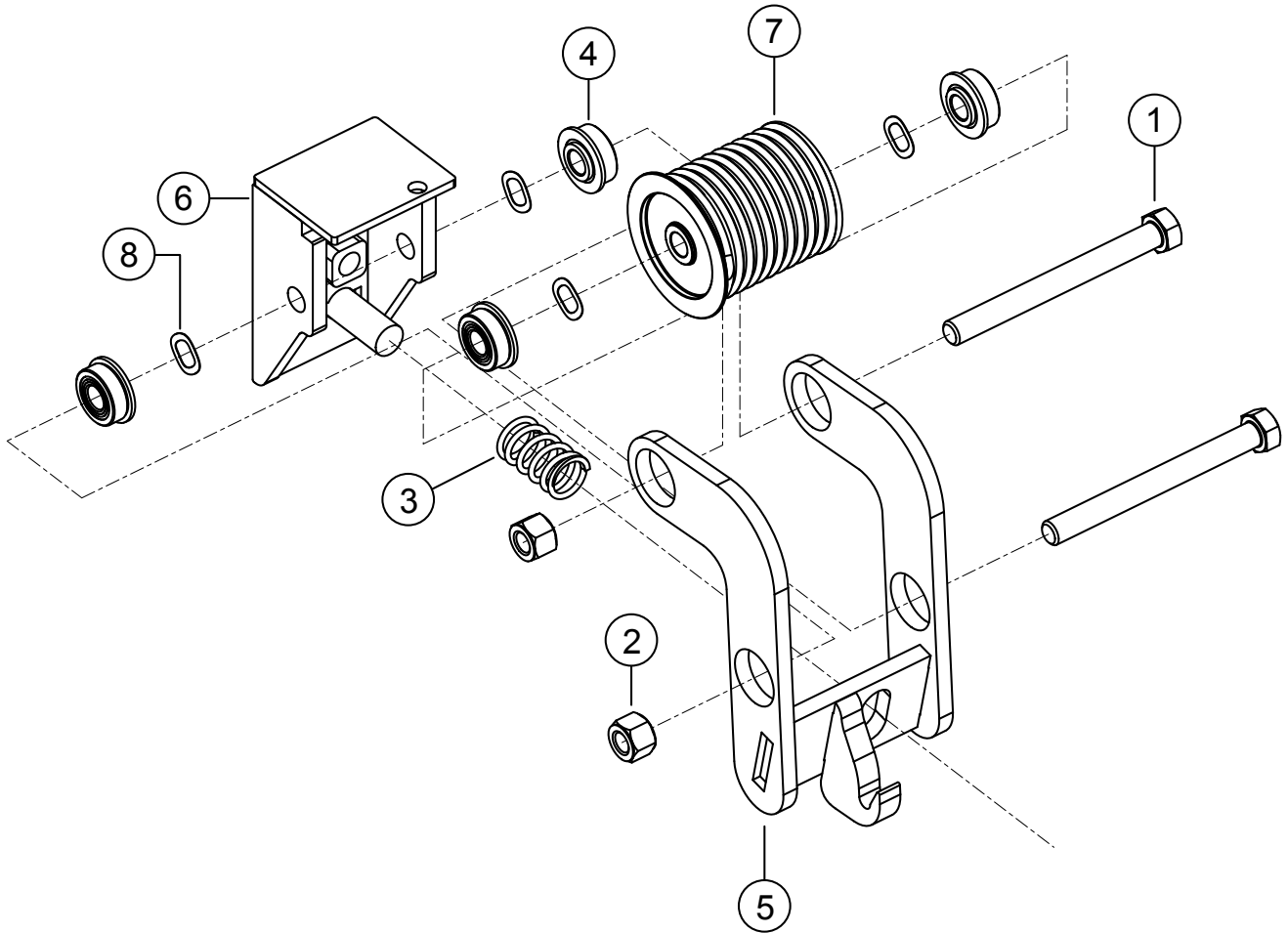
<u>NO.</u>	<u>PART NO.</u>	<u>PART NAME</u>	<u>QTY.</u>	<u>REMARKS</u>
1	19229A	TRANSFORMER ASSEMBLY, 60Hz .....	4.....	INCLUDES ITEM W/\$
2	34820	SCREW, PHP 10-24 X 3-1/2"	4	
3\$	19229B	CAPACITOR, 24uF	4	
4	12277	CLAMP, HOSE WORM #36	4	
5	34765	BRACKET, CAPACITOR, 60HZ	4	
6	34819	NUT, "U" TYPE, #10-24	4	
8	49048	SCREW, HHFS 1/4-20 X 3/4", GRD 5	10	
10	34915	TERMINAL BOARD, 6 GANG W/JUMPERS,	1	
11	44188	MOUNT WELDMENT	1	
14	8133	SCREW, PHP 10-32 X 3/4"	4	
15	34913	TERMINAL BOARD, 4 GANG W/JUMPER	1	
16	34305	SCREW, HHF SLOT, #10-32 X 3/8" GRN. ZN.	1	
17	10237	WASHER, EXT. SHKP, #10	1	
19	19957	TERM., FLGD SPD, 16-14 GA X #10, INSUL	8	
20	44136	HARNESS, LT6V BALLAST	1	
21	11942	SCREW, PHP, 10-32 X 1-1/4"	2	
22	44177	FITTING, STRAIN RELIEF, 1" DIA.	2	
23	44191	PLATE, BALLAST HARNESS COVER	1	
24	44194	PLATE, CONTROL BOX CORD GRIP	1	



## TOWER ASSY.

<u>NO.</u>	<u>PART NO.</u>	<u>PART NAME</u>	<u>QTY.</u>	<u>REMARKS</u>
1	5079	WASHER, FLAT 3/4 USS	3	
2	19266	NUT, BLIND 1/4-20 X .027 — .165	6	
3	44217	FOUR-ARM, 3/8-16 STUD	1	
4	34364	SCREW, HHFS 1/4-20 X 1/2", GR 5	6	
5	38664	GROMMET, 1/2 ID X 11/16" THCK 1/4" PAN.	1	
7	44025	HOIST, 800 LB. ELECTRIC	1	
8	44030	BRACKET W/A, VERTICAL SWIVEL MOUNT	1	
9	44060	NUT, 3/4-1, HEX SLOTTED	1	
11	44074	SCREW, 1/2-30 X 3.4" L HANGER	2	
13	44128	COVER, MAST LIMIT SENSOR MOUNT	1	
14	44133	GUARD, FRONT WINCH	1	
15	44134	GUARD, SIDE WINCH	1	
16	49694	NUT, BLIND 1/4-20 X .093" UP	3	
17	968011	NUT, HEX FINISH 1/2-13	4	
18	8158	PIN, COTTER 3/16 D X 1-1/2"	1	
19	3214	SCREW, HHC, 1/2-13 X 1-1/4"	2	
20	12220	WASHER, LOCK 1/2 HIGH STRENGTH	2	
21	0447	WASHER, FLAT 1/2 SAE	2	
22	29452	NUT, BLIND 1/4-20 X .165 — .260	2	
23	49048	SCREW, HHFS, 1/4-20 X 3/4" GR 5	4	
24	44232	GROMMET, 3/4" OD X 3/32	1	
25	10133	NUT, NYLOC 3/8-16	2	
26	10136	WASHER, FLAT SAE 3/8	2	
27	22106	SCREW, HHFS 3/8-16 X 1.25" ZINC	3	
28	44233	SWITCH, LIMIT, RAISE/LOWER	2	

## MAST CATCH ASSY.

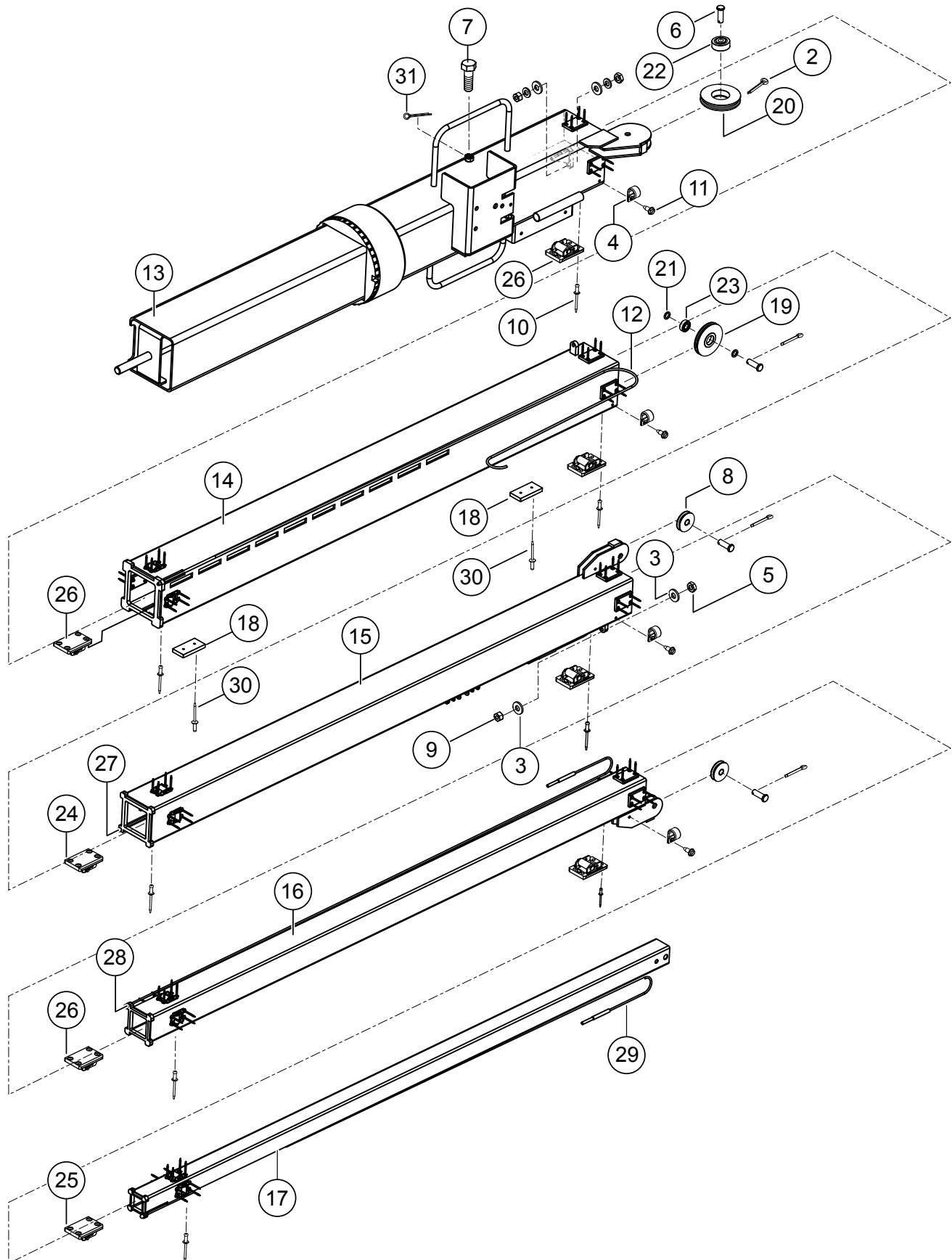




## **MAST CATCH ASSY.**

---

<b><u>NO.</u></b>	<b><u>PART NO.</u></b>	<b><u>PART NAME</u></b>	<b><u>QTY.</u></b>	<b><u>REMARKS</u></b>
1	1570	SCREW, HHC 3/8-16 X 3.75"	2	
2	10133	NUT, NYLOC 3/8-16	2	
3	44100	SPRING, MAST CATCH	1	
4	44101	BEARING, MAST CATCH FLANGE	4	
5	44102	CATCH, MAST	1	
6	44124	MAST CATCH MOUNT	1	
7	44156	PULLEY, VERT. MAST IDLER GUIDE	1	
8	44206	SPRING, IDLER PULLEY TAKE UP WAVE	4	

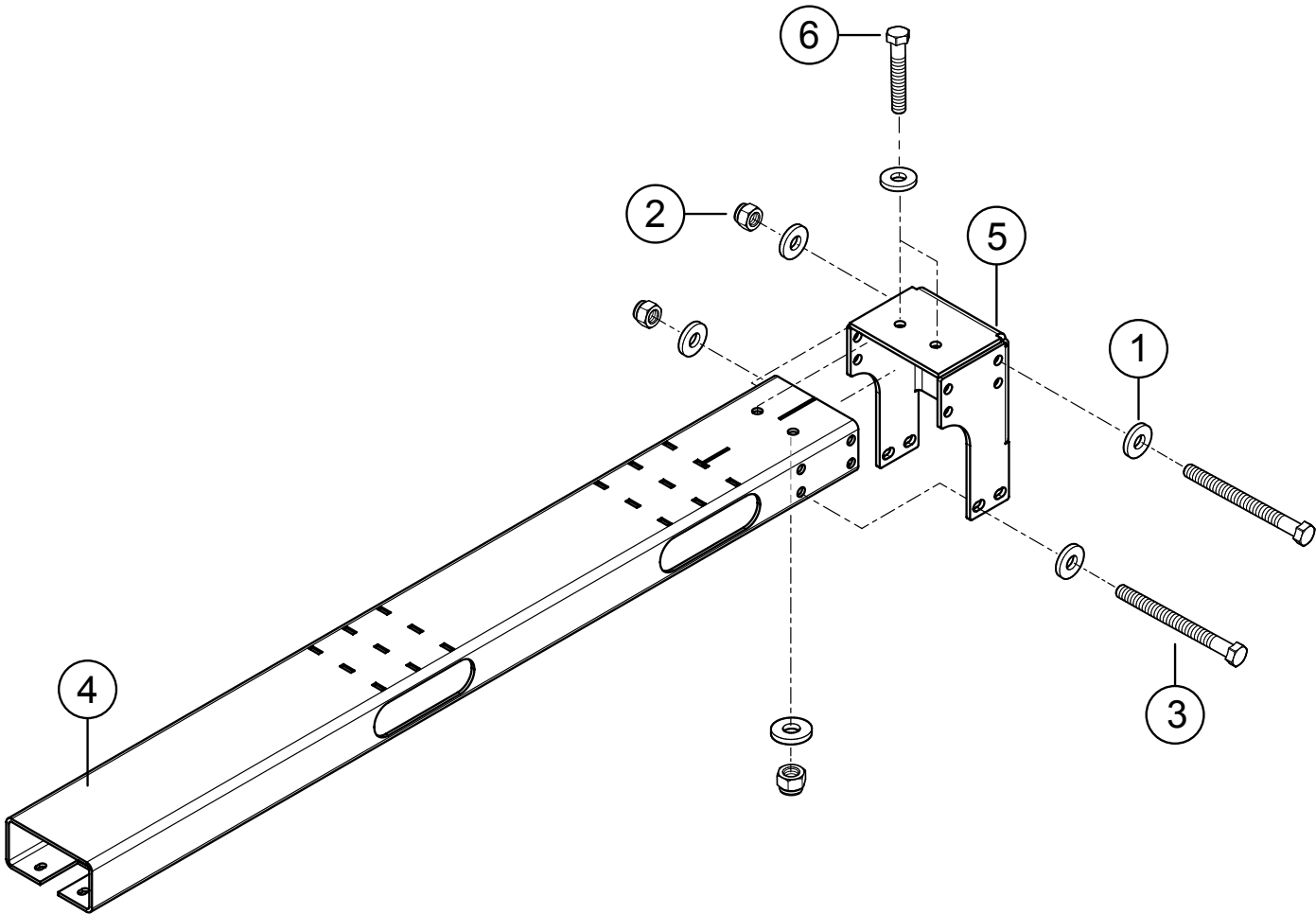


**MAST ASSY.**

<b><u>NO.</u></b>	<b><u>PART NO.</u></b>	<b><u>PART NAME</u></b>	<b><u>QTY.</u></b>	<b><u>REMARKS</u></b>
2	0183	PIN, COTTER 1/8D X 1-1/4"	4	
3	0300 B	WASHER, FLAT SAE 1/4"	6	
4	11505	CLAMP, VINYL LOOP, 1/2" X .406	4	
5	0106	NUT, HEX JAM 5/16-18	3	
6	19974	PIN, CLEVIS 1/2 X 1.25"	4	
7	29075	SCREW, HHC 1/2-13 X 1"	2	
8	29155	SHEAVE, 2.00 OD X 0.500 ID	2	
9	5283	NUT, NYLOC 5/16-18	3	
10	44230	RIVET, STRUC. BLIND, 3/16 SS	64	
11	34310	SCREW, HHF, 1/4 - 20 X 3/8"	4	
12	34796	CABLE, 3/16 X 176"	1	
13	44007	MAST, VERT. BASE UNIT	1	
14	44010	MAST, OUTER MID VERTICAL	1	
15	44014	TUBE, MIDDLE VERTICAL MAST	1	
16	44017	TUBE, INNER MID VERTICAL MAST	1	
17	44021	TUBE, TOP SECTION VERTICAL MAST	1	
18	44196	GUIDE, MAGNETIC SWITCH	2	
19	44085	SHEAVE, MAST BASE	1	
20	44086	PULLEY, VERT. BASE	1	
21	44087	SHIM, 1/2 X 3/4 X .093 STEEL	2	
22	44097	BEARING, LOWER MAST PULLEY	1	
23	44098	BEARING, MID LOWER MAST PULLEY	1	
24	44143	ROLLER ASSY., VERT. MAST MAX CL.	4	
25	44146	ROLLER ASSSY., VERT MAST MID CL.	4	
26	44147	ROLLER ASM, VERT MAST MIN CL.	24	
27	44150	WIRE ROPE ASSY., VERT. MAST MID/LWR	1	
28	44150	WIRE ROPE ASSY., VERT. MAST MID/LWR	1	
29	44151	WIRE ROPE ASSY., VERT. MAST TOP	1	
30	44192	RIVET, BLIND, CSNK, 3/16 X .251-.575	68	
31	6014 B	PIN, COTTER 3/32D X 1.00"	2	

**LIFTING BALE ASSY.**

---

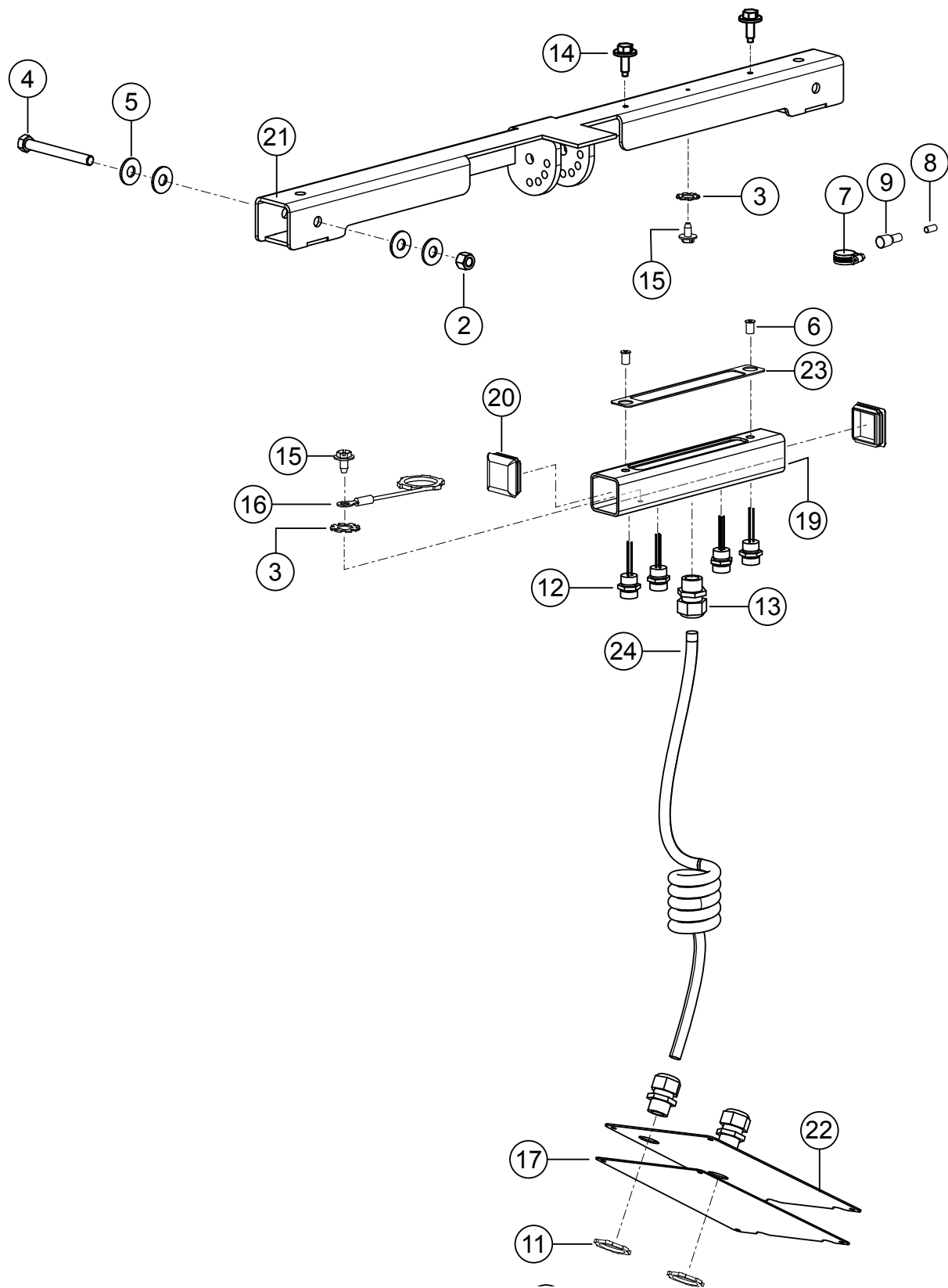


## **LIFTING BALE ASSY.**

---

<b><u>NO.</u></b>	<b><u>PART NO.</u></b>	<b><u>PART NAME</u></b>	<b><u>QTY.</u></b>	<b><u>REMARKS</u></b>
1	0447	WASHER, FLAT 1/2 SAE	16	
2	10176	NUT, NYLOC 1/2-13	8	
3	26501	SCREW, HHC 1/2-13 X 8"	6	
4	44067	LIFTING BALE	1	
5	44105	CAP, LIFTING BALE FRONT	1	
6	915221	SCREW, HHC 1/2-13 X 4-1/2"	2	

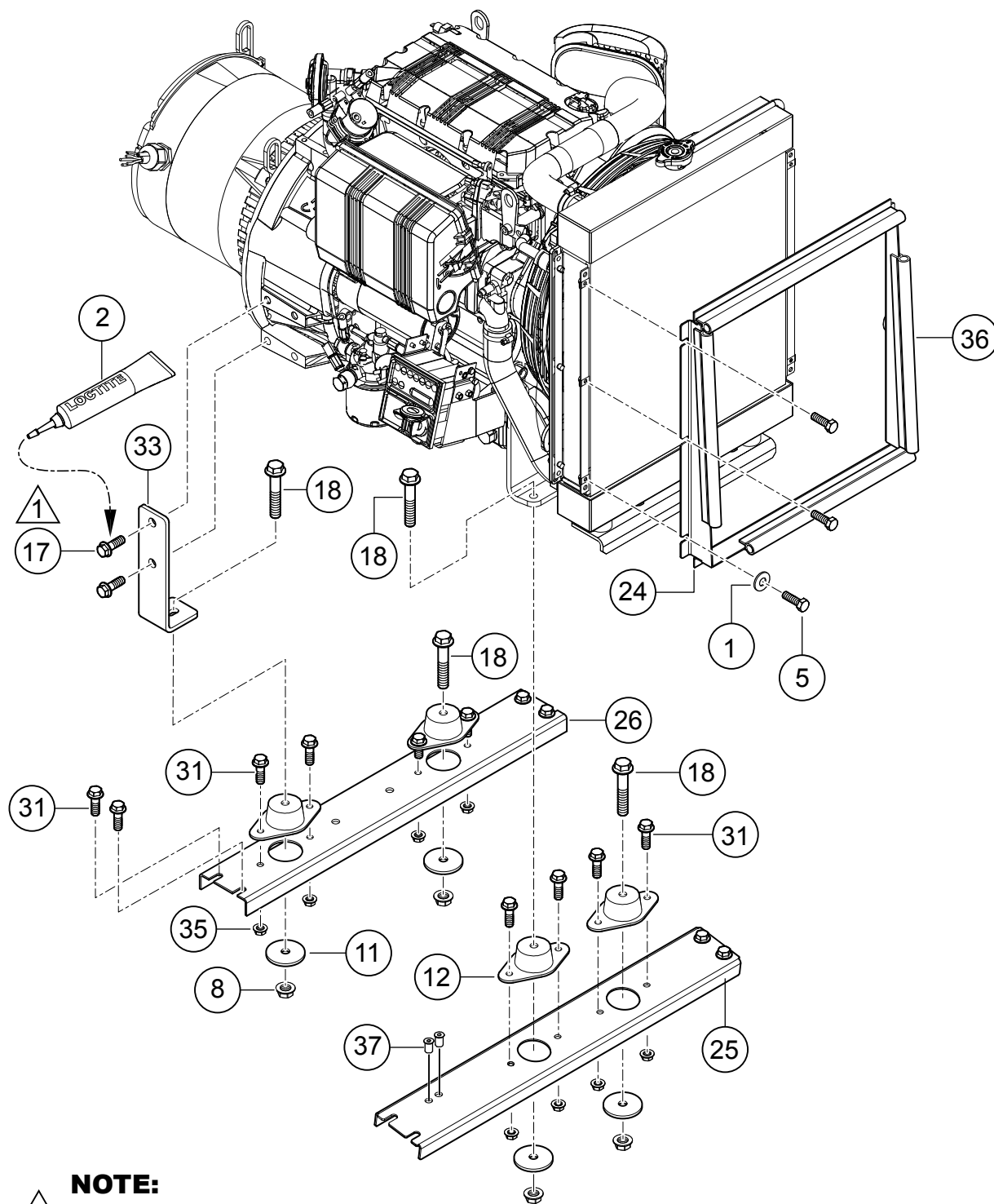
## T-BAR ASSY.



**T-BAR ASSY.**

<b><u>NO.</u></b>	<b><u>PART NO.</u></b>	<b><u>PART NAME</u></b>	<b><u>QTY.</u></b>	<b><u>REMARKS</u></b>
2	10176	NUT, NYLOC 1/2-13	2	
3	10237	WASHER, EXT. SHKP, #10	2	
4	10306	SCREW, HHC 1/2-13 X 4-1/2"	2	
5	13211	WASHER, FLAT 1/2 USS	8	
6	19266	NUT, BLIND 1/4-20 X .027 — .165	2	
7	19473	CLAMP, HOSE WORM # 2, 1/4" TO 5/8"	2	
8	19687	CRIMP, SLEEVE	3	
9	19688	INSULATOR, SPLICE CAP	3	
11	26560	NUT, LOCKING 3/4 NPT CONDUIT	3	
12	29168	RECEPTACLE, FEMALE	4	
13	29655	CORD GRIP, LIQUID TIGHT, 3/4 NPT	3	
14	30119	SCREW, 1/4-20X7/8 IND HEX	2	
15	34305	SCREW, HHF SLOT, #10-32 X 3/8"	2	
16	34368	WIRE, GROUND JUMPER	2	
17	34818	GASKET, BALLAST COVER, LEFT	1	
19	44051	TUBE, ELECTRICAL ENCLOSURE	1	
20	44052	CAP, 2.00 SQ X 1.25 W/TUBE	2	
21	44063	T-BAR	1	
22	44193	PANEL, BALAST ACCESS FRONT	1	
23	44201	GASKET, TBAR ELEC. ACCESS COVER	1	
24	49030	COIL CORD, 600V, 7 WIRE	1	

## ENGINE MOUNTING



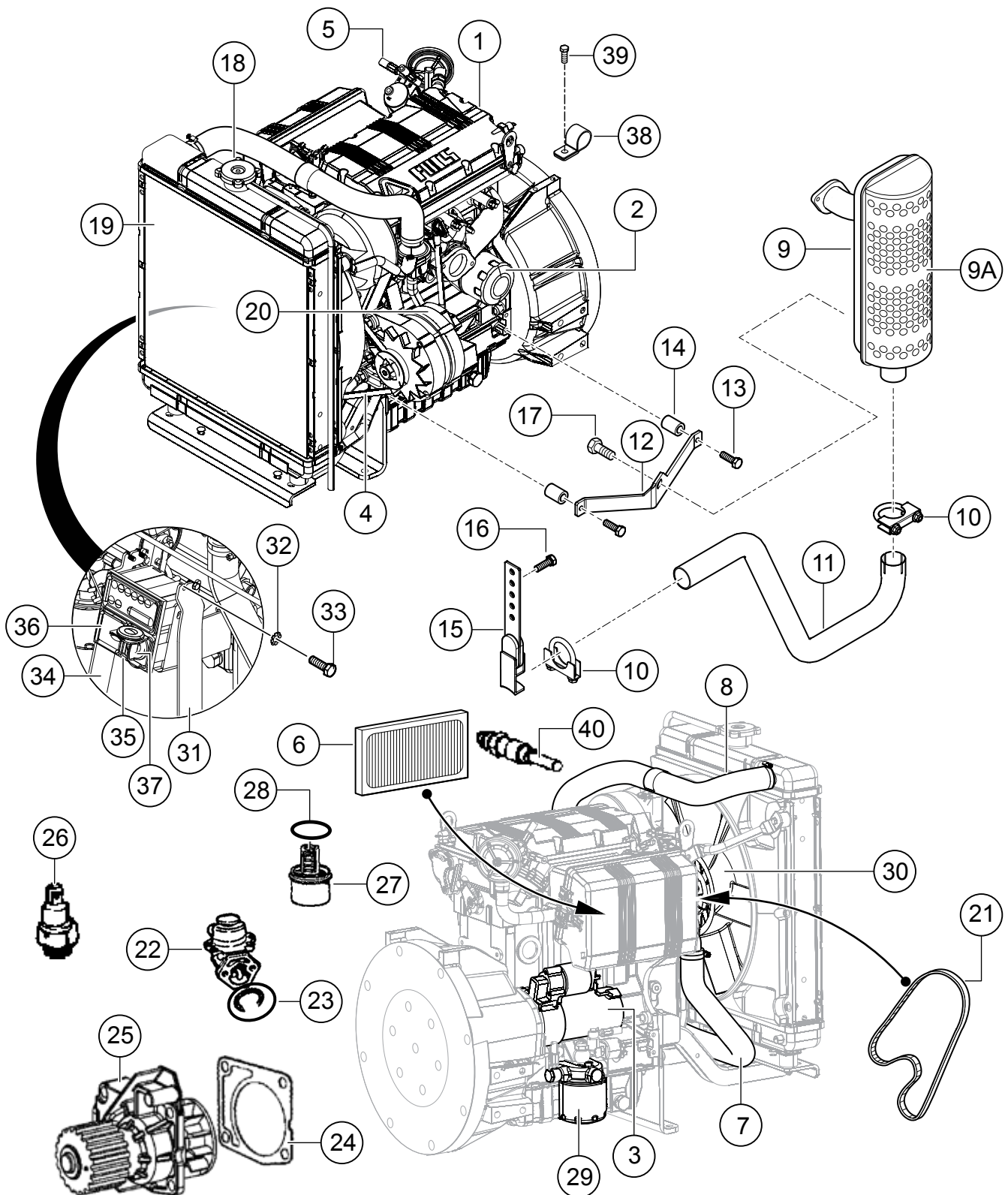
**NOTE:**  
△ APPLY LOCTITE # 271 RED



## ENGINE MOUNTING

<u>NO.</u>	<u>PART NO.</u>	<u>PART NAME</u>	<u>QTY.</u>	<u>REMARKS</u>
1	0948	WASHER, FLAT SAE 1/4"	6	
2	19379-014	LOCTITE #271 RED	AR	
5	12464	SCREW, HHC M6-1.0 X 16MM	6	
8	21781	NUT, FLANGED 3/8-16 SERRATED PLTD	4	
11	29043-001	WHEEL, POINTER .41 ID X 2.00 OD	4	
12	29269	MOUNT, VIBRATORY ENGINE	4	
17	34317	SCREW, HHFS M12-1.75 X 20MM	4	
18	34318	SCREW, HHFS 3/8-16 X 2-1/4"	4	
24	34685	SHROUD, RADIATOR	1	
25	34688	CROSSMEMBER, FRONT	1	
26	34689	CROSSMEMBER, REAR	1	
31	36720	SCREW, HHFS 5/16-18 X 3/4" GRD 5	16	
33	49003	MOUNT, REAR ENGINE	2	
35	49071	NUT, FLANGED 5/16-18 SERRATED PLTD	8	
36	60124	GASKET, SPONGE BULB .....	5.....	1PC = 1FT
37	19266	NUT, BLIND 1/4-20 x .027 — .165	4	

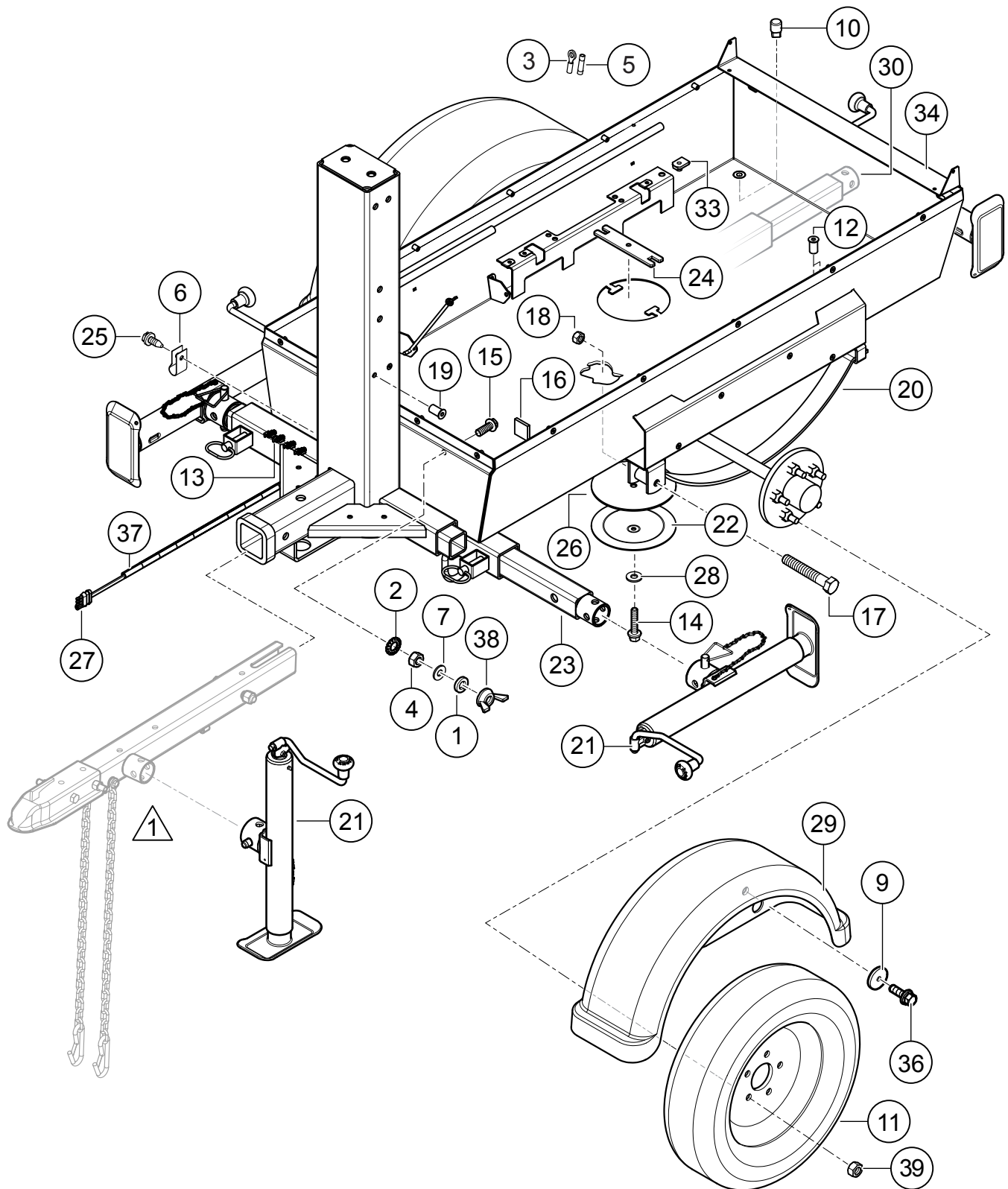
# ENGINE AND COMPONENTS



## ENGINE AND COMPONENTS

<u>NO.</u>	<u>PART NO.</u>	<u>PART NAME</u>	<u>QTY.</u>	<u>REMARKS</u>
1	29644	ENGINE, KOHLER KDW1003	1	
2	ED0021752830S	OIL FILTER	1	
3	5840224	STARTER ASSEMBLY. ....	1	REPLACES P/N ED0058402240S
4	ED0024403200S	FAN BELT 835 MM	1	
5	19761	TERMINAL, SPLICE 16-14	1	
6	ED0021751640S	CARTRIDGE, AIR FILTER	1	
7	5401195	HOSE, RADIATOR, LOWER.....	1	REPLACES P/N ED0054011950S
8	12850649	HOSE, RADIATOR, UPPER .....	1	REPLACES P/N ED0054011940S
9	5460450	MUFFLER	1	
9A	6927172	GUARD, MUFFLER	1	
10	10855	CLAMP, 1-1/2" MUFFLER	2	
11	34215	TAIL PIPE EXTENSION	1	
12	29937	BRACE, LOWER MUFFLER	1	
13	23792	SCREW, HHFS M8-1.25 X 30 MM	2	
14	29938	SPACER, MUFFLER BRACKET	2	
15	34335	HANGER, EXHAUST	1	
16	49048	SCREW, HHFS 1/4-20 X 3/4" GRD 5	2	
17	2299	BOLT, M8-1.25 X 16 MM	1	
18	ED0090002390S	RADIATOR CAP	1	
19	ED0073503220S	RADIATOR	1	
20	ED0011573910S	ALTERNATOR	1	
21	ED0024403380S	TIMING BELT	1	
22	ED0065851510S	PUMP, FUEL FEED	1	
23	1200087	O-RING, FEED PUMP	1	
24	4580215	GASKET, WATER PUMP	1	
25	6584438	WATER PUMP	1	
26	6745056	OIL PRESSURE SWITCH	1	
27	9195124	THERMOSTAT	1	
28	12850153	O-RING, THERMOSTAT	1	
29	ED0021752880S	FUEL FILTER	1	
30	ED0097183240S	COOLING FAN	1	
31	34814	MOUNT, RIGHT ENG. CONTROL BOX	1	
32	10237	WASHER, EXT. SHKP, #10	4	
33	34823	SCREW, HHC M5-.8 X 12 MM, 8.8 DIN	4	
34	34813	MOUNT, LEFT ENG. CONTROL BOX	1	
35	ED34001S	KEY, IGNITION, DOUBLE SIDED	1	
36	ED0072454650S	CONTROL PANEL	1	
37	ED0050412980S	IGNITION SWITCH	1	
38	8125	CLAMP, HOSE SUPPORT 5/8"	1	
39	22021	SCREW, HEX M8-1.25 X 20 MM GRD10.9	1	
40	2100089	GLOW PLUG	3	

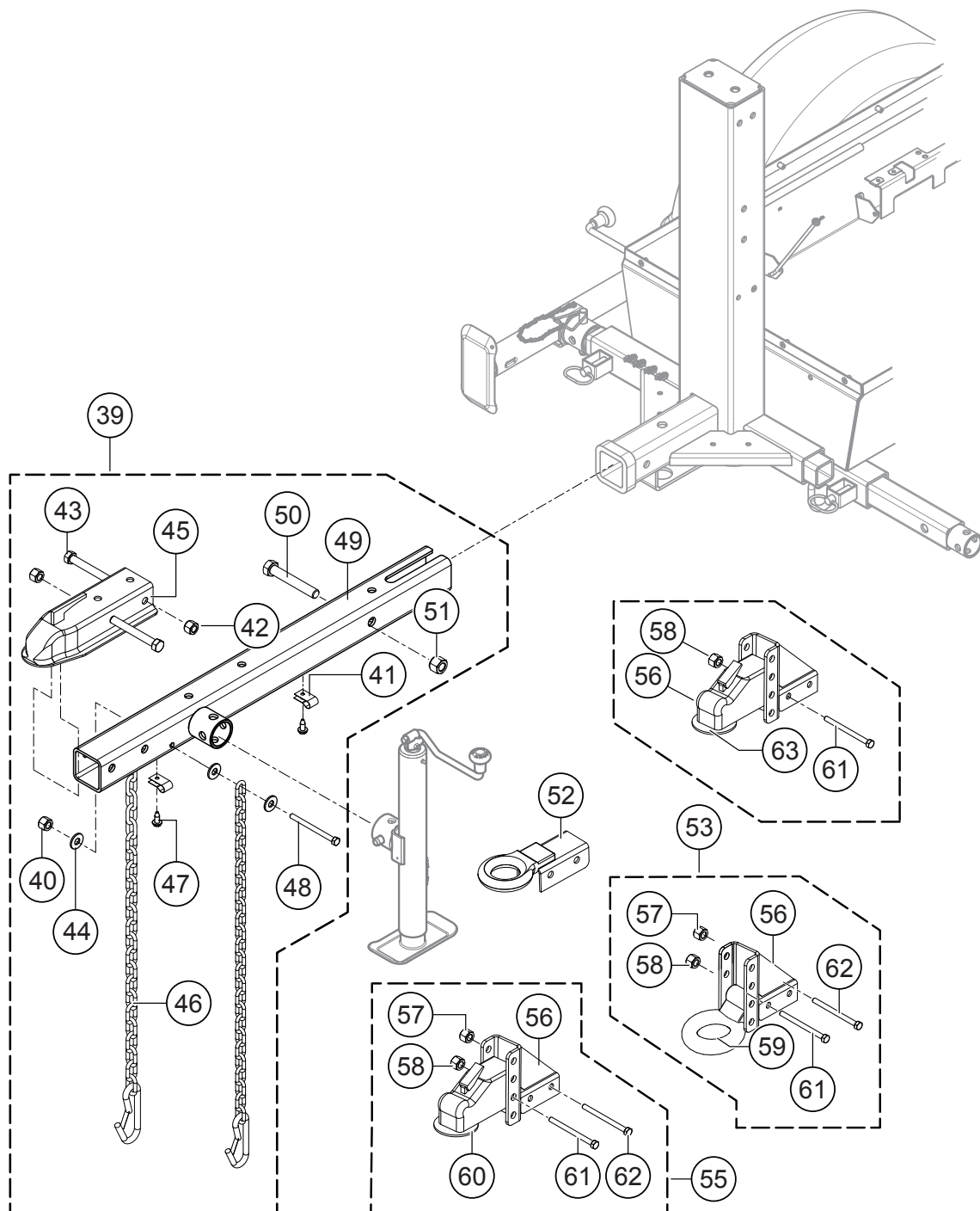
## TUB/TRAILER ASSY.



**TUB/TRAILER ASSY.**

<b><u>NO.</u></b>	<b><u>PART NO.</u></b>	<b><u>PART NAME</u></b>	<b><u>QTY.</u></b>	<b><u>REMARKS</u></b>
1	0166 A	WASHER, LOCK, 3/8 MED.	1	
2	0479	WASHER, EXT. SHKP, 3/8 PLTD	1	
3	1319	TERMINAL, RING 16-14 1/4" LOOP	1	
4	1876	NUT, HEX JAM 3/8-16	1	
5	2540	CONNECTOR, BUTT SPLICE, 16-14	1	
6	8126	CLAMP, HOSE 1/2" LOOP X .25 HOLE	1	
7	10136	WASHER, FLAT SAE 3/8	1	
9	10930	WASHER, FENDER, 1/4 X 1-1/4	4	
10	16185	FITTING, PLUG 1/4" MP SQ HD	1	
11	19045	WHEEL/TIRE ST175/80-13 L.R. C	2	
12	19266	NUT, BLIND 1/4-20 X .027-.165	2	
13	19761	TERMINAL, SPLICE 16-14	4	
14	21906	SCREW, HHFS 5/16-18 X 1-1/2" GR 5	1	
15	22106	SCREW, HHFS 3/8-16 x 1.25" ZINC	1	
16	23976	MOUNTING BASE, ADHESIVE TIE WRAP	2	
17	29248	SCREW, HHC 9/16-18 X 3", AXLE MOUNT	2	
18	29249	NUT, 9/16-18	2	
19	29452	NUT, BLIND 1/4-20 X .165-.260	4	
20	34015	AXLE, SPRING ASSEMBLY	1	
21	34093	JACK, 2000#, 10" TOP WIND, TUBE MOUNT	4	
22	34101	COVER, ACCESS PANEL	1	
23	34197	OUTRIGGER	2	
24	34213	BACKING BAR, ACCESS PANEL	1	
25	34310	SCREW, HHF, 1/4 - 20 x 3/8	1	
26	34378	GASKET, ACCESS COVER	1	
27	34604	HARNESS, 25' 4 FLAT TRAILER END	1	
28	34640	WASHER, SEALING, 5/16 X 3/4	1	
29	34720	FENDER	2	
30	34736	OUTRIGGER W/A, REAR	1	
33	35358	NUT, PANEL, U-TYPE, 5/16-18 X .05/.20	8	
34	44034	TUB/FRAME W/A	1	
36	49048	SCREW, HHFS 1/4-20 X 3/4" GRD 5	8	
37	60221	LOOM, .375 SPLIT .....	5.....	1PC = 1 FT
38	W29109	NUT, WING 3/8-16	1	
39	29184	NUT, LUG 1/2-20	10	

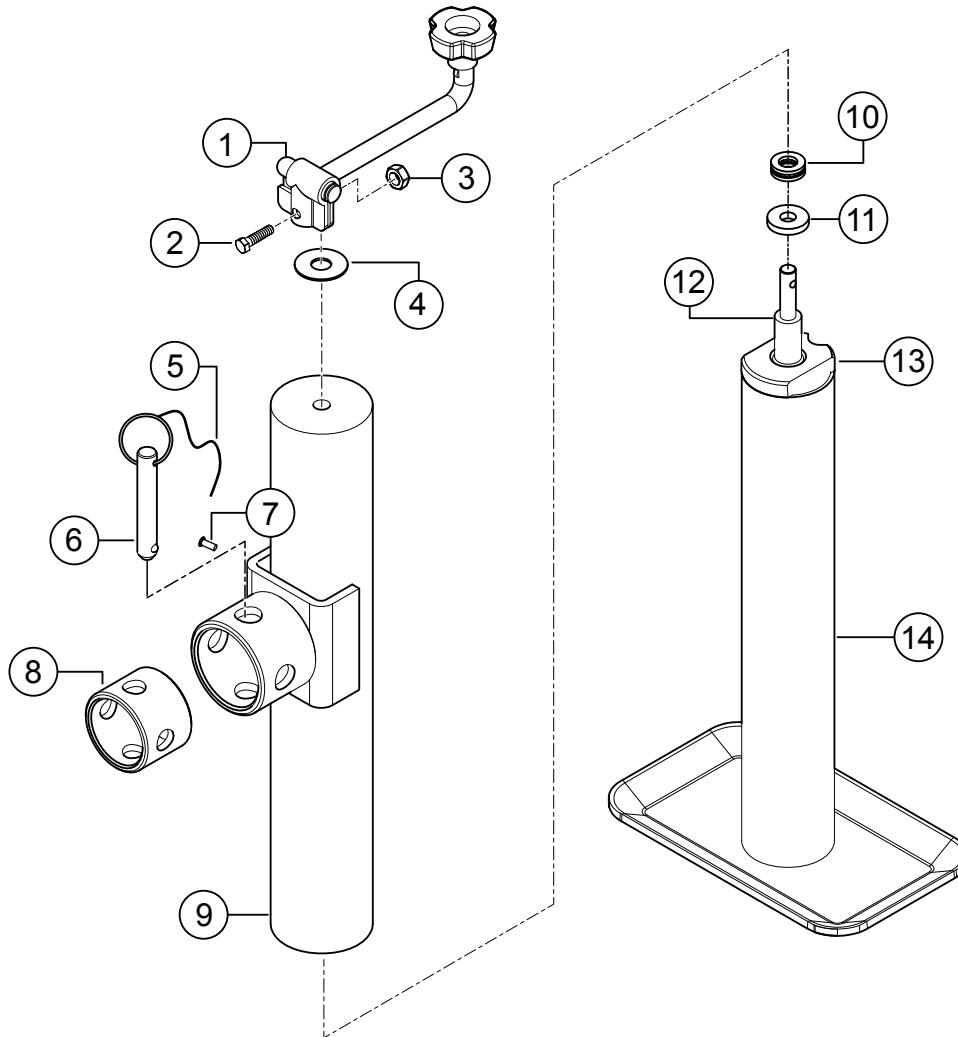
## TONGUE ASSY.



**TONGUE ASSY.**

<b>NO.</b>	<b>PART NO.</b>	<b>PART NAME</b>	<b>QTY.</b>	<b>REMARKS</b>
39	44210	TONGUE ASSEMBLY .....	1	INCLUDES ITEMS W/\$
40\$	5283	NUT, NYLOC 5/16-18	1	
41\$	8126	CLAMP, HOSE 1/2" LOOP X .25" HOLE	2	
42\$	10176	NUT, NYLOC 1/2-13	2	
43\$	16521	SCREW, HHC 1/2-13 X 4" GRD 8	2	
44\$	19470	WASHER, FLAT 5/16" USS	4	
45\$	29546	COUPLER, 2" BALL 2.50" TUBE	1	
46\$	34005	CHAIN, SAFETY	2	
47\$	34310	SCREW, HHF, 1/4-20 X 3/8"	2	
48\$	34370	SCREW, HHC 5/16-18 X 4.0" GRD 8	1	
49\$	44211	HITCH TUBE	1	
50\$	915319	SCREW, HHC 5/8-11 X 4" GRD 8	1	
51\$	9503	NUT, NYLOC 5/8-11	1	
52	29791	HITCH, PINTLE FIXED (OPTION)	1	
53	29721	HITCH, PINTLE KIT, ADJ. HGT. (OPTION).....	1	INCLUDES ITEMS W/@
54	29720	HITCH BALL, 2" ADJ. HEIGHT (OPTION).....	1	INCLUDES ITEMS W/%
55	34812	HITCH BALL KIT, 2-5/16" ADJ. HGT (OPTION) 1.....	1	INCLUDES ITEMS W/#
56@#%	29718	COUPLER ADAPTER	1	
57@#	10176	NUT, NYLOC 1/2-13	2	
58@#%	9503	NUT, NYLOC 5/8-11	2	
59@	29369	PINTLE EYE, ADJUSTABLE	1	
60#	34811	COUPLER, 2-5/16" BALL, ADJUSTABLE	1	
61@#	915218	SCREW, HHC 1/2-13 X 3-3/4" GRD 8	2	
62@#%	9502	SCREW, HHC 5/8-11 X 4-1/2" GRD 8	2	
63%	29228	COUPLER, 2" BALL, ADJUSTABLE	1	

## JACK STAND ASSY.



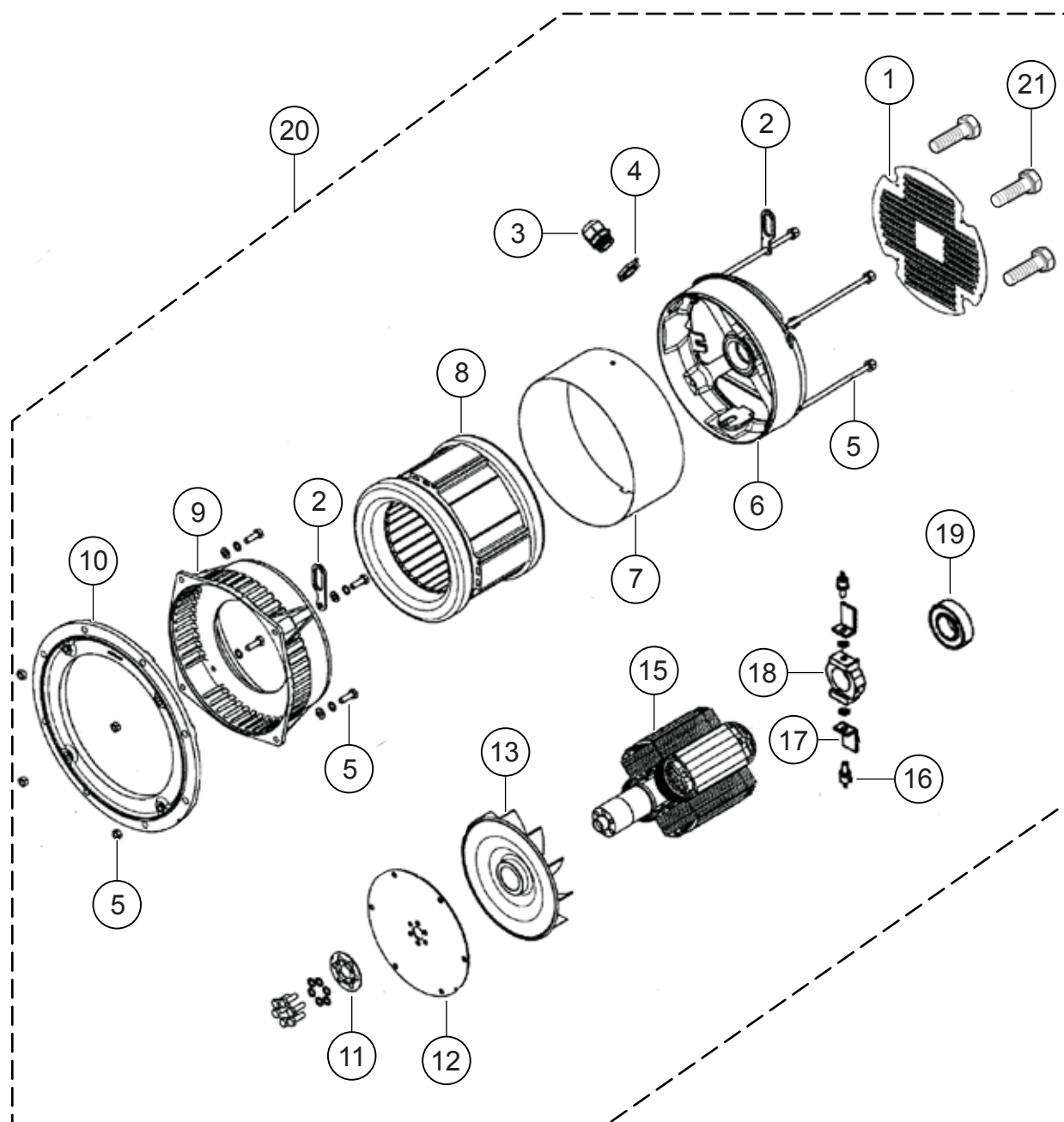


## **JACK STAND ASSY.**

---

<b><u>NO.</u></b>	<b><u>PART NO.</u></b>	<b><u>PART NAME</u></b>	<b><u>QTY.</u></b>	<b><u>REMARKS</u></b>
1	345109-01	HANDLE ASSEMBLY	1	
2	345109-02	BOLT M6X28	1	
3	345109-03	LOCK NUT M6	1	
4	345109-04	WASHER	1	
5	345109-05	CHAIN	1	
6	345109-06	PIN	1	
7	345109-07	CHAIN RIVET	1	
8	345109-08	MALE MOUNT TUBE	1	
9	345109-09	OUTER TUBE ASSEMBLY	1	
10	345109-10	BEARING	1	
11	345109-11	HEATED WASHER	1	
12	345109-12	THREAD	1	
13	345109-13	MAIN NUT	1	
14	345109-14	INNER TUBE	1	

## GENERATOR ASSY.

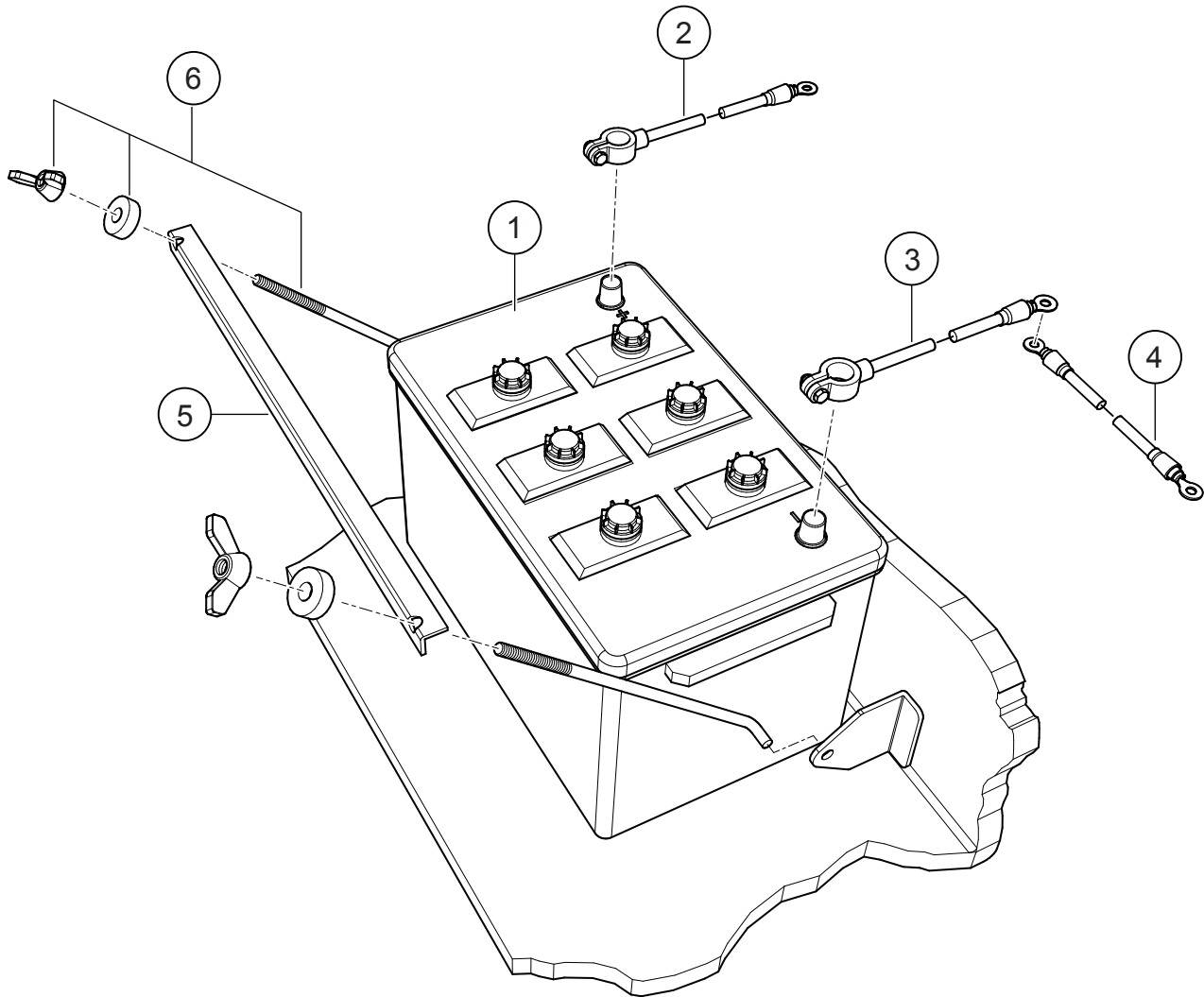


## GENERATOR ASSY.

<u>NO.</u>	<u>PART NO.</u>	<u>PART NAME</u>	<u>QTY.</u>	<u>REMARKS</u>
1%	9903905068	REAR SEAL	1	
2%	9903905069	LIFTING HOOK	2	
3%	9909510155	PG21 CABLE GLAND	1	
4%	9909510195	PG21 NUT	1	
5%	GELT3100ROD	COVER STAY BOLT AND NUT	4	
6%	6102204175	NON-DRIVE END BRACKET	1	
7%	GELT3ENCBAND	ENCLOSING BAND	1	
8%	GELT3100STATOR60	WOUND STATOR AND FRAME	1	
9%	6102208192	DRIVE END BRACKET	1	
10%	6102208193	INTERCHANGEABLE FLANGE	1	
11%	6110611508	RING SPACER	1	
12%	GEECO3DISC65	FLEXIBLE DISC	1	
13%	7502223039	FAN	1	
15%	GELT3100ROTOR60	ROTOR ASSY	1	
16%	9910359005	DIODES	2	
17%	7501001015	HEAT SINK, ROTATING DIODE BRIDGE	2	
18%	9909527011	SUPPORT, ROTATING DIODE BRIDGE	1	
19%	9900905055	REAR BEARING 6205-2RS	1	
20	29895	GENERATOR .....	1	INCLUDES ITEMS W/%
21%	29895SCREW	COVER SCREWS, SET OF 3	1	

## BATTERY ASSY.

---



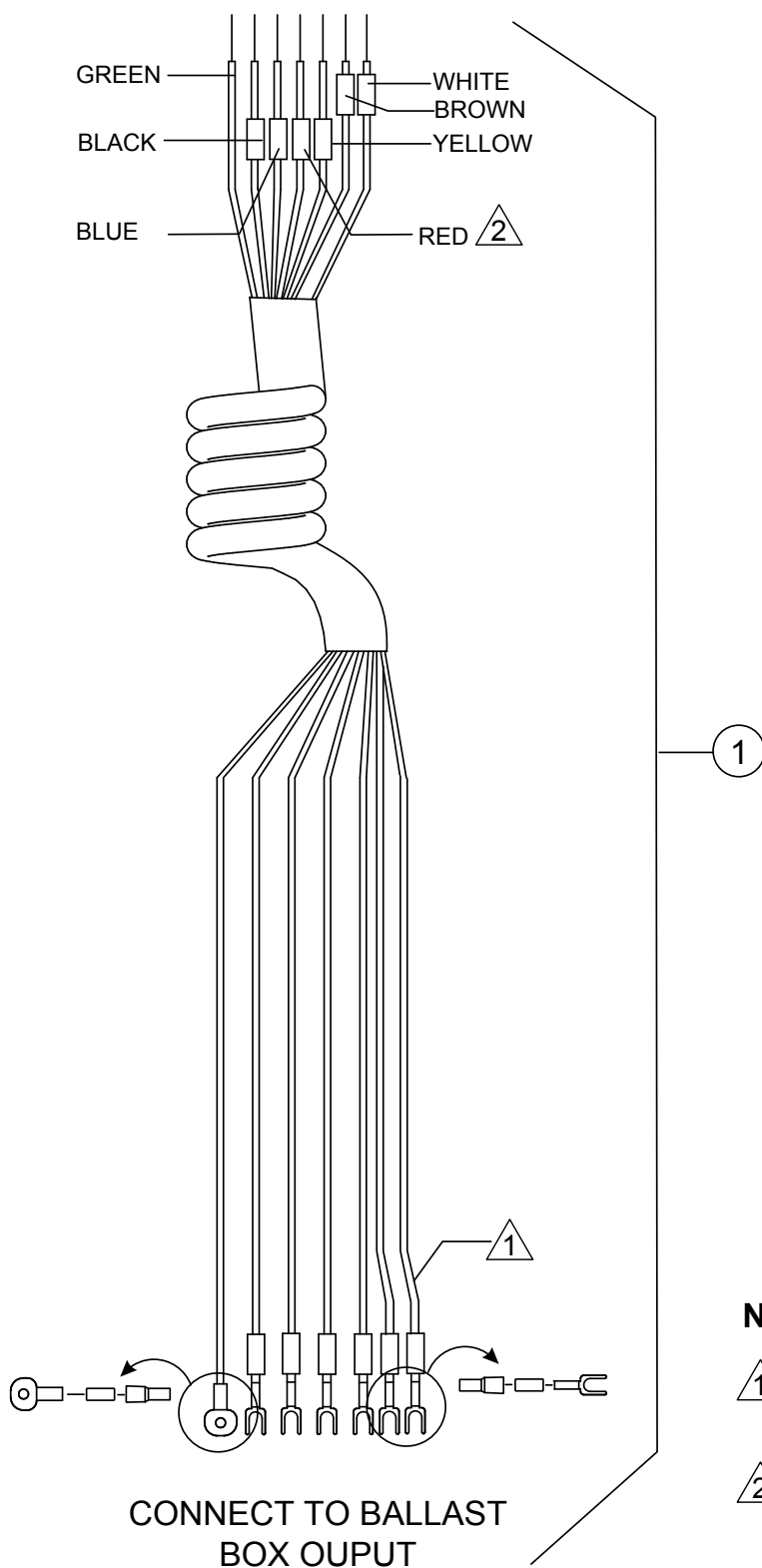
## **BATTERY ASSY.**

---

<u>NO.</u>	<u>PART NO.</u>	<u>PART NAME</u>	<u>QTY.</u>	<u>REMARKS</u>
1	10315	BATTERY, 12V GROUP 24 WET	1	
2	34393	CABLE, BATTERY POS 4GA X 48" POST	1	
3	34392	CABLE, BATTERY NEG 6GA X 20" POST	1	
4	34394	CABLE, BATTERY CHASSIS GROUND	1	
5	34759	BATTERY HOLD DOWN	1	
6	34900	BOLT-J, W/HARDWARE	2	

## COIL CORD ASSY.

CONNECT TO T-BAR ASSEMBLY



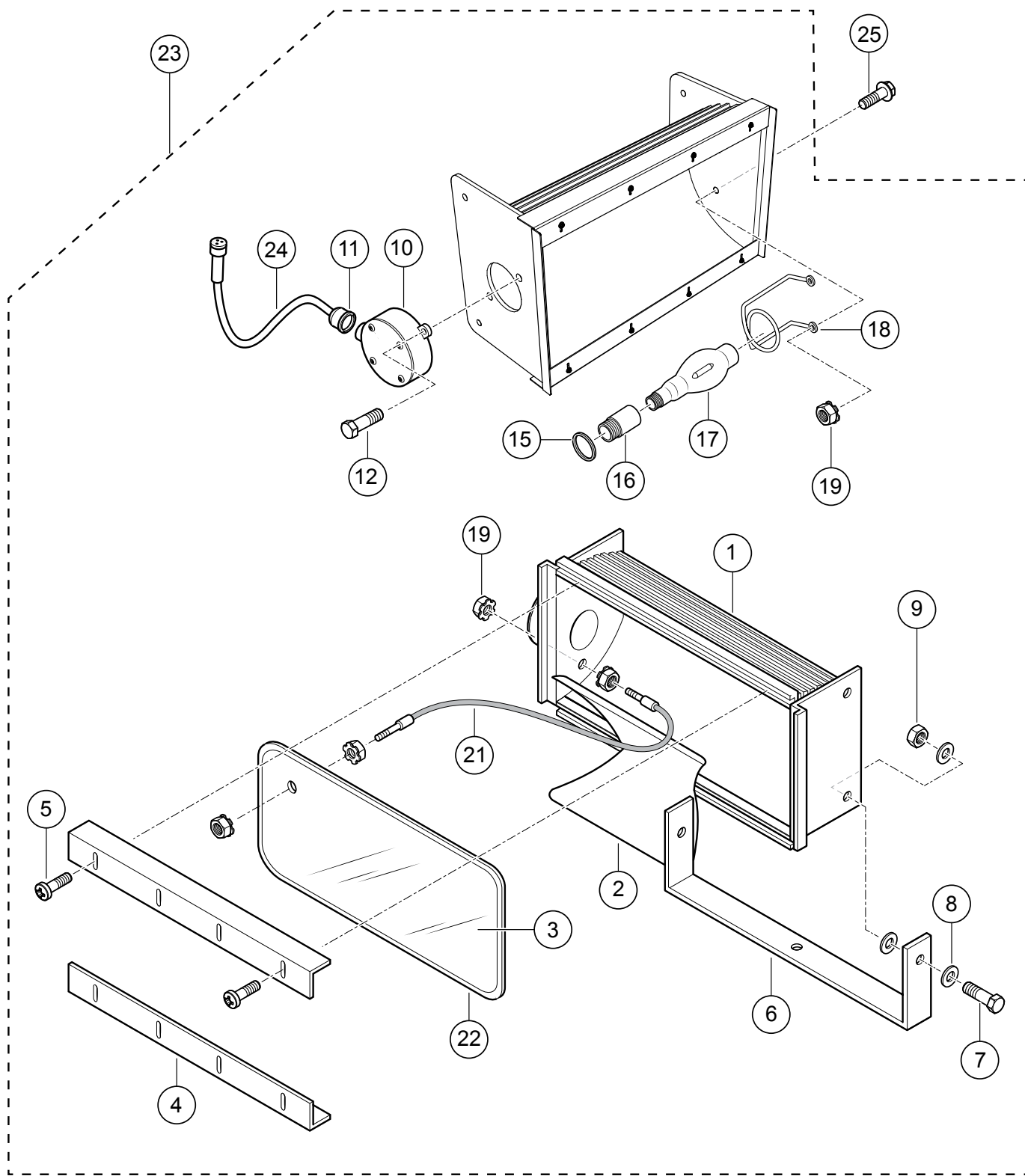
### NOTES:

- ① CONNECT THIS END OF COIL CORD ASSY. TO BALLAST BOX. REFERENCE ELECTRICAL SCHEMATIC DIAGRAM IN OPERATION MANUAL.
- ② CONNECT THIS END OF COIL CORD ASSY. TO T-BAR ASSY. REFERENCE ELECTRICAL SCHEMATIC DIAGRAM IN OPERATION MANUAL.

**COIL CORD ASSY.**

---

<u>NO.</u>	<u>PART NO.</u>	<u>PART NAME</u>	<u>QTY.</u>	<u>REMARKS</u>
1	34880	COIL CORD ASSEMBLY .....	1.....	INCLUDES ITEMS W/#

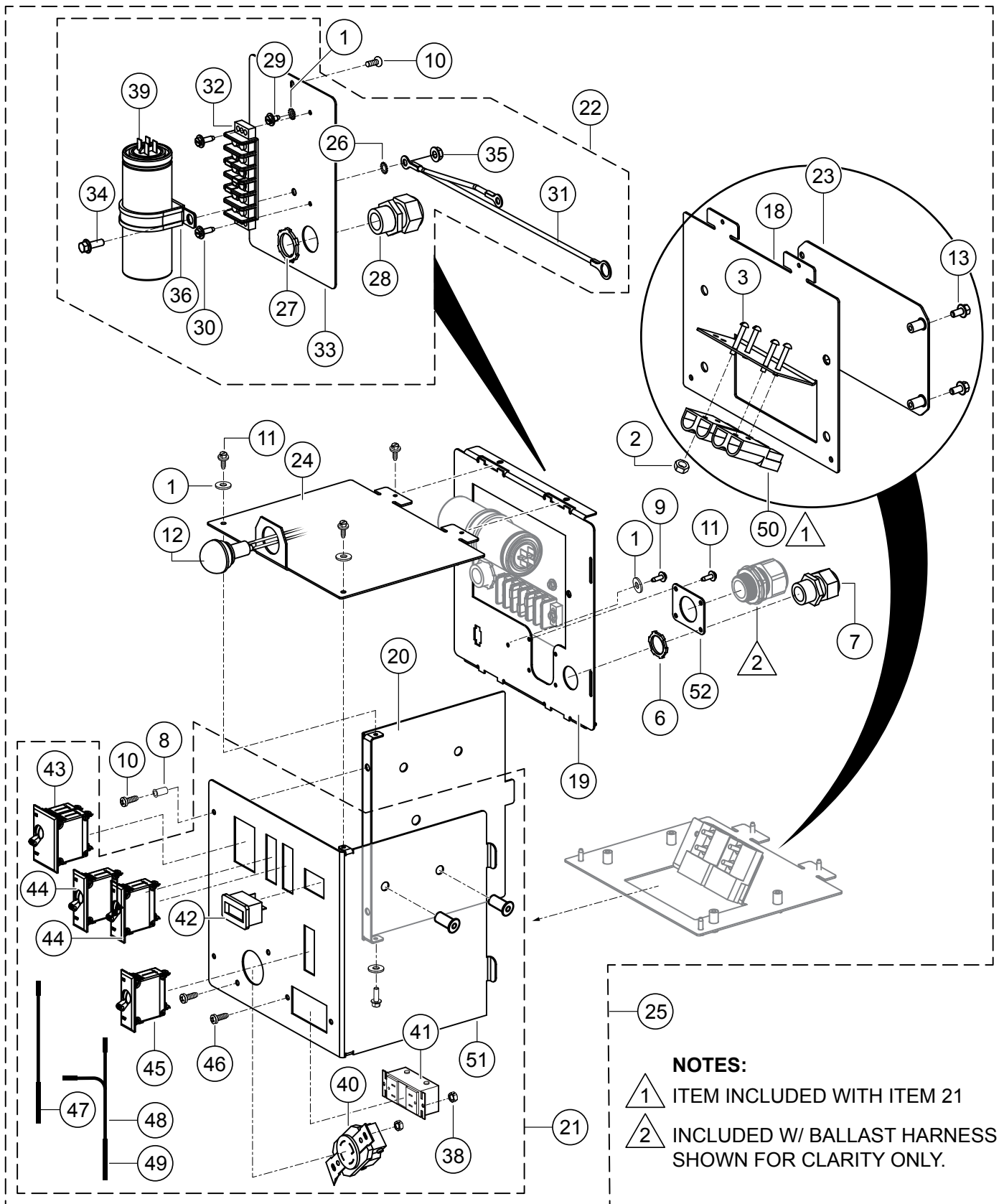




## LAMP ASSY.

<u>NO.</u>	<u>PART NO.</u>	<u>PART NAME</u>	<u>QTY.</u>	<u>REMARKS</u>
1%	20S-REF-1	REF1000 BODY ASSEMBLY	1	
2%	30M-REF-REF	REFLECTOR, ALUMINUM	1	
3%	190ZQREF	REF 1000 LENS	1	
4%	170M-REF-5	REF LENS HOLD DOWN	2	
5%	70Z-FSCR3	SCREW 8-32 X 1/2"	8	
6%	250-REF-6	YOKE, LIGHT FIXTURE	1	
7%	260Z-FSCR9	BOLT, HEX HEAD 1/2-13 X 1-1/2"	2	
8%	280Z-FWFL2	WASHER, FLAT 1/2"	4	
9%	270Z-FNT4	NUT, HEX 1/2-13	2	
10%	Z-C-239	VAPORTITE OCTAGON BOX 1/2"		
		W/4 THREADED PLUGS G9 SILVER	1	
11%	150Z-FSR3	STRAIN RELIEF SRW 1/2" BLACK	1	
12%	Z-FSCR9	BOLT, HEX HD, 1/2-13 X 1-1/2" ZN PLT.	2	
15%	90Z-G-102	GASKET, HEX #5 OR #6	1	
16%	70Z-SK65	SOCKET, MOGUL W/GASKET	1	
17%	MVR1000BT37	BULB, LIGHT FIXTURE	1	
18%	50Z-D-REF-SUP	SUPPORT, REF1000 LAMP TIP	1	
19%	230Z-FNTL6-1	KEEPER NUT #8-32	6	
21%	210S-CBL-6	CABLE ASSEMBLY	1	
22%	200ZG106	GASKET, U-CHANNEL REFLECTOR	1	
23	29773	LIGHT FIXTURE ASSEMBLY.....	1.....	INCLUDES ITEMS W/%
24%	150Z-EZ67	POWER CORD, 60" W/ 3-PIN MALE PLUG	1	
25	4106781000	SCREW, 8-32 X 3/8"	2	

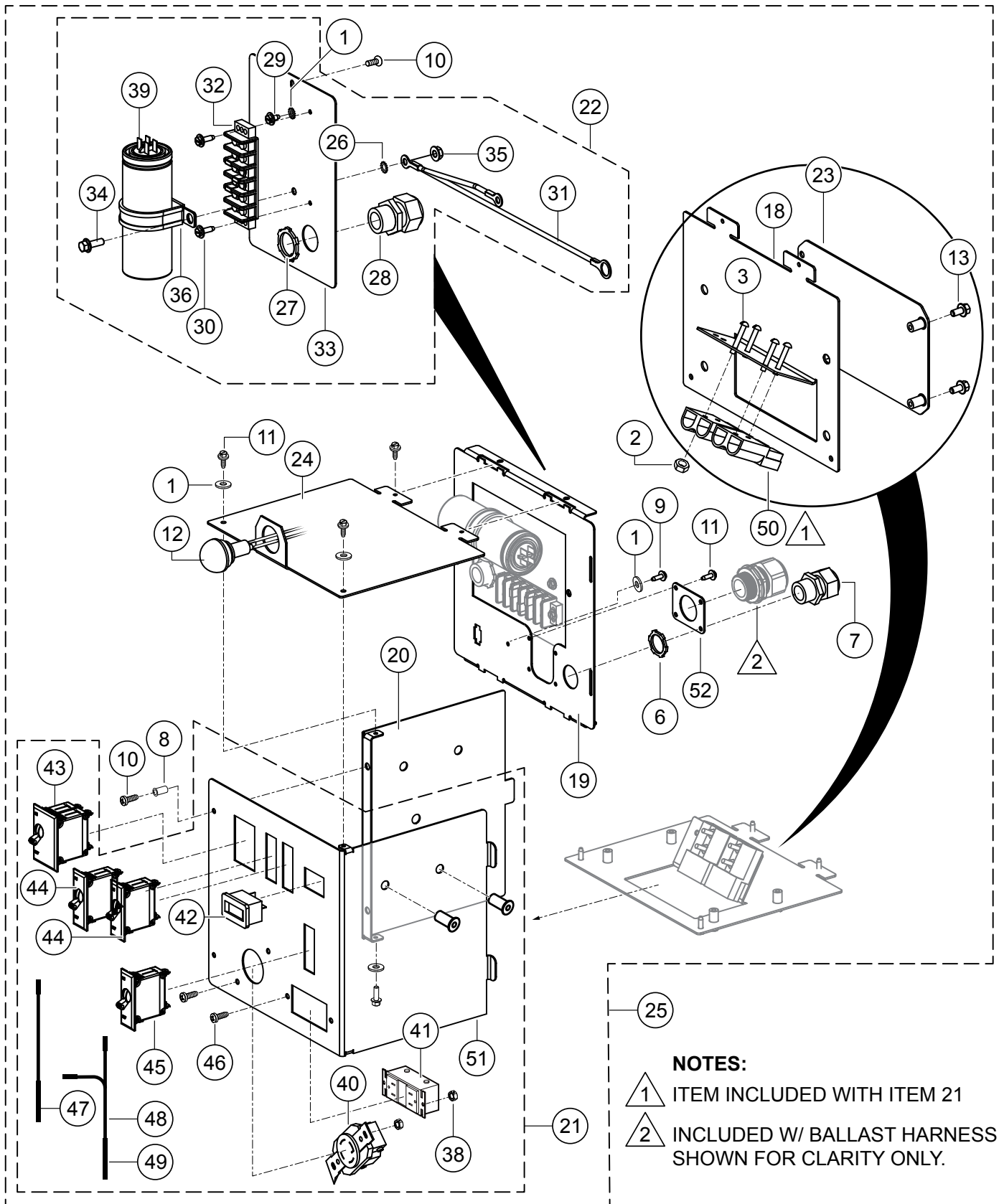
# CONTROL PANEL ASSY.



## CONTROL PANEL ASSY.

<u>NO.</u>	<u>PART NO.</u>	<u>PART NAME</u>	<u>QTY.</u>	<u>REMARKS</u>
1@	10237	WASHER, EXT. SHKP, #10	9	
2@	10019	NUT, NYLOC 6-32	4	
3@	11942	SCREW, PHP 10-32 X 1-1/4"	4	
4@	19266	NUT, BLIND 1/4-20 X .027-.165	4	
5@	2574	GROMMET, 5/16" ID 7/16"OD 1/16	1	
6@	26560	NUT, LOCKING 3/4 NPT CONDUIT	1	
7@	29655	CORDGRIP, LIQUID TIGHT, 3/4 NPT	1	
8@	29797	NUT, BLIND 10-32 X .020-.130	4	
9@	34305	SCREW, HHF SLOT, #10-32 x 3/8"	1	
10@	34306	SCREW, PHP, #10-32x5/8"	4	
11@	34309	SCREW, HHF SLOT, #10-32 x 3/8	12	
12@	34347	LAMP, COMPACT COURTESY, 2 WIRE	1	
13@	34364	SCREW, HHFS 1/4-20 X 1/2, GR 5	4	
18@	44219	PANEL, CNTRL. BOX BOTTOM	1	
19@	44168	PANEL, CNTRL. BOX REAR	1	
20@	44218	PANEL, CNTRL. BOX LEFT PANEL	1	
21@	44171	CNTRL BOX MAIN PANEL ASSY. ....	1	INCLUDES ITEMS W/#
22@	44173	PANEL ASSY., CNTRL. BOX REAR ACCESS...	1	INCLUDES ITEMS W/\$
23@	44174	PANEL, CNTRL. BOX BTM ACCESS COVER ..	1	
24@	44200	PANEL, CONTROL BOX TOP	1	
25	44166	CNTRL BOX ASSEMBLY .....	1	INCLUDES ITEMS W/@
26@\$	10031	WASHER, EXT. SHKP, 1/4	1	
27@\$	26560	NUT, LOCKING 3/4 NPT CONDUIT	1	
28@\$	29655	CORDGRIP, LIQUID TIGHT, 3/4 NPT	1	
29@\$	34305	SCREW, HHF SLOT, #10-32 x 3/8"	1	
30@\$	34308	SCREW, HHF SLOT, #10-32 x 5/8	2	
31@\$	44202	WIRE, PANEL GROUND	1	
32@\$	34914	T.B. W/JUMPERS, 6 GANG, CNTRLS	1	
33@\$	44172	PANEL, CNTRL BOX REAR ACCESS	1	
34@\$	49048	SCREW, HHFS 1/4-20 x 3/4 GR 5	1	
35@\$	49070	NUT, FLANGED 1/4-20 SERRATED PLTD	1	
36@\$	59005	CLAMP, LOOP 2.0" X .53 HOLE	1	
38@#	10019	NUT, NYLOC 10-32	8	
39@\$	59006	EXCITATION CAPACITOR	1	

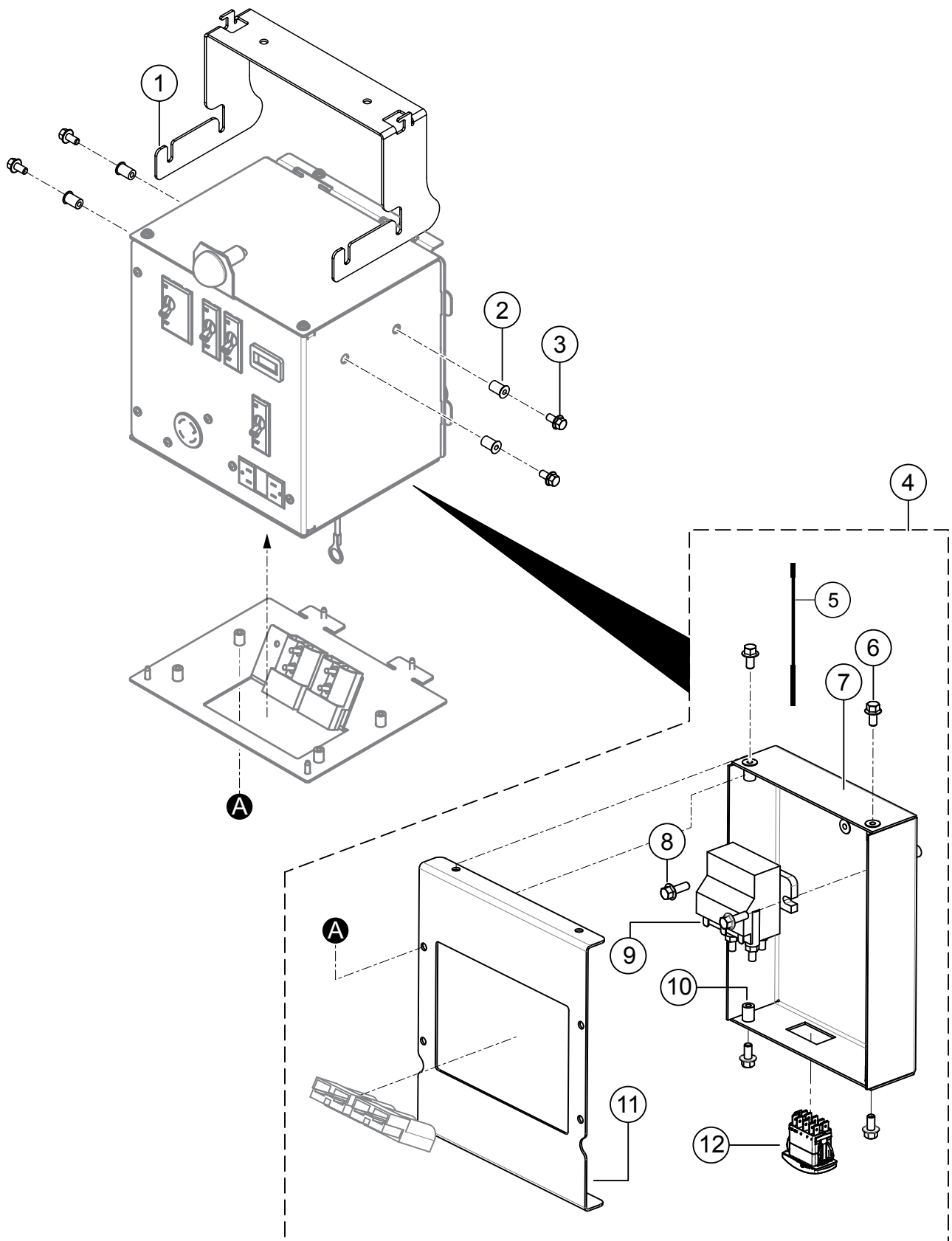
# CONTROL PANEL ASSY. (CONTINUED)



## CONTROL PANEL ASSY. (CONTINUED)

<u>NO.</u>	<u>PART NO.</u>	<u>PART NAME</u>	<u>QTY.</u>	<u>REMARKS</u>
40@#	29276	RECEPTACLE, 4PRG LOCKING, NEMA L-14-30R	1	
41@#	34963	RECEPTACLE, GFCI DUPLEX, 15A, UL/CSA	1	
42@#	29640	HOUR METER, SENDEC RECT FLUSH MOUNT	1	
43@#	34096	CIRCUIT BREAKER, 30A UL489, 2 POLE SNAP FIT	1	
44@#	34097	CIRCUIT BREAKER, 20A, UL 489 SNAP FIT	2	
45@#	34098	CIRCUIT BREAKER, 15A UL 489 SNAP FIT	1	
46@#	34306	SCREW, PHP, #10-32x5/8"	4	
47@#	34829	WIRE, LT6 GFCI LINE	1	
48@#	34929	HARNESS, 220 OUTLET "Y" 10 GA	1	
49@#	34930	HARNESS, 220 OUTLET "X" 10 GA	1	
50@#	44162	CONNECTOR, 2 POLE	2	
51@#	44170	PANEL, LT6K CONTROL BOX BOTTOM	1	
52@	44194	PLATE, CONTROL BOX XORD GRIP-MOUNT	1	

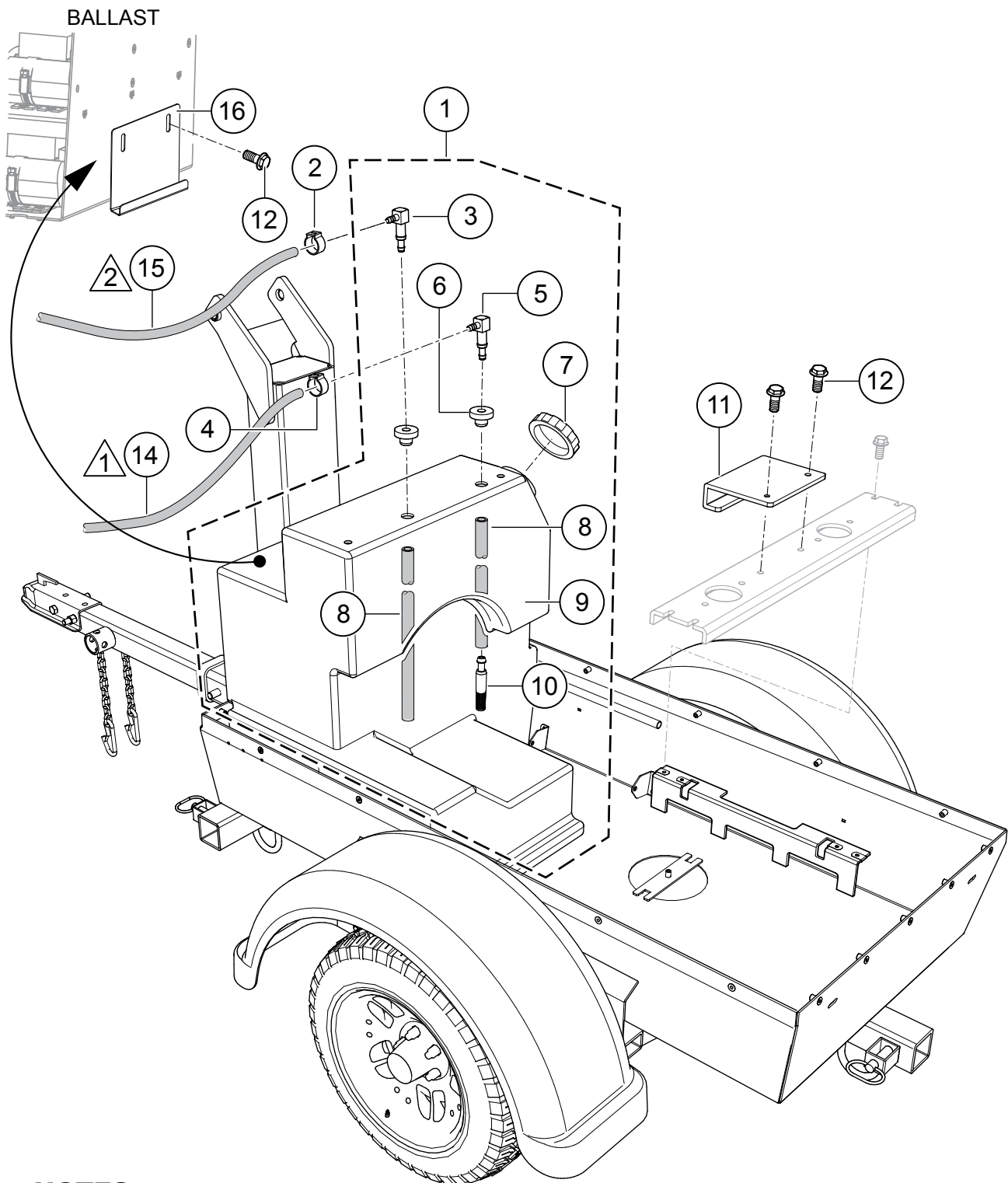
## CONTROL PANEL ASSY.



## CONTROL PANEL ASSY.

<u>NO.</u>	<u>PART NO.</u>	<u>PART NAME</u>	<u>QTY.</u>	<u>REMARKS</u>
1	34758	BRACKET, CONTROL BOX MOUNTING	1	
2	19266	NUT, BLIND 1/4-20 X .027-.165	4	
3	34364	SCREW, HHFS 1/4-20 X 1/2" GR 5	4	
4	44175	WINCH CONTROL BOX ASSEMBLY .....	1.....	INCLUDES ITEMS W/\$
5\$	44138	HARNESS	1	
6\$	34364	SCREW, HHFS 1/4-20 X 1/2" GR5	4	
7\$	44165	BOTTOM, WINCH CONTROL BOX	1	
8\$	49048	SCREW, HHFS 1/4-20 x 3/4" GR 5	2	
9\$	44031	CONTACTOR, 12V 60A WINCH	1	
10\$	19266	NUT, BLIND 1/4-20 X .027-.165	6	
11\$	44164	COVER, WINCH CONTROL BOX TOP	1	
12\$	21470	SWITCH, ROCKER	1	

## FUEL TANK, HOSES AND MOUNTING ASSY.



### NOTES:

- 1** (triangle) CONNECTS TO FUEL PUMP **SUCTION SIDE**
- 2** (triangle) CONNECTS TO **FUEL RETURN**



## FUEL TANK, HOSES AND MOUNTING ASSY.

<b>NO.</b>	<b>PART NO.</b>	<b>PART NAME</b>	<b>QTY.</b>	<b>REMARKS</b>
1	34767	FUEL TANK ASSY.....	1.....	INCLUDES ITEMS W/\$
2	22066	CLAMP, STEPLESS EAR 3/16" HOSE	2	
3\$	12007	FITTING, 90° 4SBARB X 6-4SBARB	1	
4	22067	CLAMP, STEPLESS EAR 1/4" HOSE	2	
5\$	12006	FITTING, 90° 3MBARB X 6-4SBARB	1	
6\$	19633	BUSHING, RUBBER FUEL	2	
7\$	29694	CAP, FUEL W/LANYARD, KELCH 3-1/2"	1	
8\$	60058	HOSE, .25 YELLOW PVC, 30" L.....	5.....	1PC = 1FT
9\$	34738	TANK, FUEL W/ FITTINGS	1	
10\$	12009	FILTER, IN-TANK	1	
11	34716	BRACKET, FUEL TANK, LOWER	1	
12	49048	SCREW, HHFS 1/4-20 X 3/4" GRD5	4	
14	60013	HOSE, FUEL Ø.250 LOW PERM 50 PSI .....	3.....	1PC = 1FT
15	60004	HOSE, FUEL Ø.1875 LOW PERM 50 PSI 5.5'..	6.....	1PC = 1FT
16	34836	BRACKET, FUEL TANK, UPPER	1	

# TERMS AND CONDITIONS OF SALE — PARTS

## PAYMENT TERMS

Terms of payment for parts are net 30 days.

## FREIGHT POLICY

All parts orders will be shipped collect or prepaid with the charges added to the invoice. All shipments are F.O.B. point of origin. Multiquip's responsibility ceases when a signed manifest has been obtained from the carrier, and any claim for shortage or damage must be settled between the consignee and the carrier.

## MINIMUM ORDER

The minimum charge for orders from Multiquip is \$15.00 net. Customers will be asked for instructions regarding handling of orders not meeting this requirement.

## RETURNED GOODS POLICY

Return shipments will be accepted and credit will be allowed, subject to the following provisions:

1. A Returned Material Authorization must be approved by Multiquip prior to shipment.
2. To obtain a Return Material Authorization, a list must be provided to Multiquip Parts Sales that defines item numbers, quantities, and descriptions of the items to be returned.
  - a. The parts numbers and descriptions must match the current parts price list.
  - b. The list must be typed or computer generated.
  - c. The list must state the reason(s) for the return.
  - d. The list must reference the sales order(s) or invoice(s) under which the items were originally purchased.
  - e. The list must include the name and phone number of the person requesting the RMA.
3. A copy of the Return Material Authorization must accompany the return shipment.
4. Freight is at the sender's expense. All parts must be returned freight prepaid to Multiquip's designated receiving point.

5. Parts must be in new and resalable condition, in the original Multiquip package (if any), and with Multiquip part numbers clearly marked.
6. The following items are not returnable:
  - a. Obsolete parts. (If an item is in the price book and shows as being replaced by another item, it is obsolete.)
  - b. Any parts with a limited shelf life (such as gaskets, seals, "O" rings, and other rubber parts) that were purchased more than six months prior to the return date.
  - c. Any line item with an extended dealer net price of less than \$5.00.
  - d. Special order items.
  - e. Electrical components.
  - f. Paint, chemicals, and lubricants.
  - g. Decals and paper products.
  - h. Items purchased in kits.
7. The sender will be notified of any material received that is not acceptable.
8. Such material will be held for five working days from notification, pending instructions. If a reply is not received within five days, the material will be returned to the sender at his expense.
9. Credit on returned parts will be issued at dealer net price at time of the original purchase, less a 15% restocking charge.
10. In cases where an item is accepted, for which the original purchase document can not be determined, the price will be based on the list price that was effective twelve months prior to the RMA date.
11. Credit issued will be applied to future purchases only.

## PRICING AND REBATES

Prices are subject to change without prior notice. Price changes are effective on a specific date and all orders received on or after that date will be billed at the revised price. Rebates for price declines and added charges for price increases will not be made for stock on hand at the time of any price change.

Multiquip reserves the right to quote and sell direct to Government agencies, and to Original Equipment Manufacturer accounts who use our products as integral parts of their own products.

## SPECIAL EXPEDITING SERVICE

A \$35.00 surcharge will be added to the invoice for special handling including bus shipments, insured parcel post or in cases where Multiquip must personally deliver the parts to the carrier.

## LIMITATIONS OF SELLER'S LIABILITY

Multiquip shall not be liable hereunder for damages in excess of the purchase price of the item with respect to which damages are claimed, and in no event shall Multiquip be liable for loss of profit or good will or for any other special, consequential or incidental damages.

## LIMITATION OF WARRANTIES

No warranties, express or implied, are made in connection with the sale of parts or trade accessories nor as to any engine not manufactured by Multiquip. Such warranties made in connection with the sale of new, complete units are made exclusively by a statement of warranty packaged with such units, and Multiquip neither assumes nor authorizes any person to assume for it any other obligation or liability whatever in connection with the sale of its products. Apart from such written statement of warranty, there are no warranties, express, implied or statutory, which extend beyond the description of the products on the face hereof.

Effective: February 22, 2006

[illegible]

# PARTS MANUAL

## HERE'S HOW TO GET HELP

PLEASE HAVE THE MODEL AND SERIAL  
NUMBER ON-HAND WHEN CALLING

### UNITED STATES

#### ***Multiquip Corporate Office***

18910 Wilmington Ave.      Tel. (800) 421-1244  
Carson, CA 90746      Fax (310) 537-3927  
Contact: mq@multiquip.com

#### ***Service Department***

800-421-1244      Fax: 310-537-4259  
310-537-3700

#### ***Technical Assistance***

800-478-1244      Fax: 310-943-2238

#### ***MQ Parts Department***

800-427-1244      Fax: 800-672-7877  
310-537-3700      Fax: 310-637-3284

#### ***Warranty Department***

800-421-1244      Fax: 310-943-2249  
310-537-3700

---

### CANADA

#### ***Multiquip***

4110 Industriel Boul.      Tel: (450) 625-2244  
Laval, Quebec, Canada H7L 6V3      Tel: (877) 963-4411  
Contact: jmartin@multiquip.com      Fax: (450) 625-8664

---

### UNITED KINGDOM

#### ***Multiquip (UK) Limited Head Office***

Unit 2, Northpoint Industrial Estate,      Tel: 0161 339 2223  
Globe Lane,      Fax: 0161 339 3226  
Dukinfield, Cheshire SK16 4UJ  
Contact: sales@multiquip.co.uk

© COPYRIGHT 2016, MULTIQUIP INC.

Multiquip Inc, the MQ logo are registered trademarks of Multiquip Inc. and may not be used, reproduced, or altered without written permission. All other trademarks are the property of their respective owners and used with permission.

This manual MUST accompany the equipment at all times. This manual is considered a permanent part of the equipment and should remain with the unit if resold.

The information and specifications included in this publication were in effect at the time of approval for printing. Illustrations, descriptions, references and technical data contained in this manual are for guidance only and may not be considered as binding. Multiquip Inc. reserves the right to discontinue or change specifications, design or the information published in this publication at any time without notice and without incurring any obligations.

Your Local Dealer is:



**P/N: 44228**